



# Member Resource News

September 2005  
In this Issue

SRM's New EVP	2
Annual Meeting Information	3
Silent Auction	4
Call for Papers	5
Lost Resources	6
Position Announcement	7
New Membership Application	8
Membership Information	10
SRM Section Calendar	12



**Deadline for the October  
2005 SRM Member  
Resource News**

Remember to get your position announcements, columns, section announcements, agency information, etc. in by the 15<sup>th</sup> of September for the October issue of the newsletter.

---

---

## When Scientists and Managers Mingle

Karen Launchbaugh, SRM Director

---

---

While growing up on Dry Creek in western North Dakota, the best range manager I knew was a bachelor rancher, named Bob, who lived down the road. Bob made money on cattle when no one else did and his rangeland was in great shape. I often wondered how a guy with only a high school education and no formal training in range management could really put it all together and do such a good job. Then, one cold November day I stopped by Bob's place to deliver some hay. He invited me in for a cup of coffee – an offer no true Dakotan would pass up. The answer to my wondering was immediately answered when I entered the kitchen. To my immense surprise, I found stacks and stacks of books, journals, and magazines. These well-thumbed volumes varied from livestock trade journals, to *Mother Earth News*, to the *Journal of Range Management*. Here was the embodiment of a life-long learner and a person who inherently understood the confluence of science and management.

To SRM members, the idea of scientists and managers working together and carrying on meaningful conversations seems normal. It is my observation that this is far from “normal” and it is a great unique strength of our organization. Most scientific societies don't want to be bothered by practitioners with their pesky questions of applied science. Likewise, most practitioner organizations seldom seek camaraderie with ivory-tower academics who want to study the world to death. But, look at us—we concomitantly publish the premier scientific journal of rangelands and conduct workshops and symposiums addressing on-the-ground applications. We are powerfully unique. A simple testament to this was a statement by a new Japanese transfer student in the Rangeland Ecology and Management program at the University of Idaho. Japan is not exactly a well-known rangeland country, so upon meeting this student I asked her why she wanted to pursue a career in rangeland management. Her answer was “because range people, you know how to work with people to get things done on the ground.” Wow! That pretty much sums it up. We apply science and work with people to manage these dynamic landscapes called rangelands.

There's at least one big problem with this whole happy science-management scenario—nature seldom gives simple clear-cut answers. Dr. Fred Provenza stated this problem eloquently in his article *Science, Myth, and the Management of Natural Resources in Rangelands 2000* (August). Provenza wrote “*Interconnectedness and dynamism—history, necessity, chance—influence system behavior over time and space, and they make the behavior of every holon unique and context dependent. Thus, it is*

*impossible to generalize from time to time and place to place. Virtually anything is possible given different combinations of climate, soils, plants, animals, and people.*” This reality strains the relationship between the scientist and manager in all of us. Management asks a simple question; science answers, “It depends.” A persistent myth in natural resource management is that science will solve many of the contentious issues of our modern era. There is an increasing use of scientific review procedures to inform decision makers. A good example is the recent scientific review panel convened by the US Fish and Wildlife Service to inform managers on sage-grouse and the sagebrush ecosystem. While the use of scientific review panels can be informative for management and policy decisions, they don’t provide clear answers. They just indicate the potential outcomes.

What is SRM doing to harness this reciprocal relationship between science and management? First, we tolerate, support and promote endeavors of both ecology and management on rangelands. Second, we strive to inform policy makers with policy statements on such topics as livestock grazing on rangelands, desertification, rangeland inventories, and maintaining and improving environmental qualities (see the SRM web page at: [www.rangelands.org/about\\_policystatements\\_all.shtml](http://www.rangelands.org/about_policystatements_all.shtml)). Third, we are dedicated to education about rangelands through certification and continuing education of rangeland professionals and rangeland managers, accreditation of university programs in rangeland science and management ([http://www.rangelands.org/education\\_certification.shtml](http://www.rangelands.org/education_certification.shtml)), excellent and informative annual meetings, and journals including *Rangelands* and *Rangeland Ecology and Management*. Finally, we realize that studying and managing rangelands requires an inherently interdisciplinary approach. Therefore, we are working to build stronger relationships with our sister organizations like the Society of American Foresters, the Ecological Society of America, the American Fisheries Society and The Wildlife Society.

We are a group of people who love rangelands and know how to work with people to get things done on the ground. As summer rolls into fall and your grass shears and pencils are heavy, take a deep breath and know that you are part of an organization of people who are really working to sustain your beloved rangelands.

---

---

## Meet SRM’s New Executive Vice President

---

---

Hello. I am the new Executive Vice President for the Society for Range Management. My name is Jason Campbell. Some of you may know me from my work several years ago with the livestock industry; to others I know I will be a completely new acquaintance. I assumed my new responsibilities with SRM on August 22, 2005, and I cannot express how thrilled I am to be associated with not only the current SRM leadership and staff, but also to be able to carry forward the great traditions and history of the Society itself.

I come to SRM from the University of Maryland, where I was a program manager for Center for Firefighter Safety Research and Development, as well as the Managing Editor for several publications for the Maryland Fire and Rescue Institute. I currently live in Bowie, Maryland with my wife Carrie, and two step-daughters Casey and Catherine. I was born and raised in western Canada, and all of my family still live and work in Southern Alberta.

I am a graduate of Montana State University (College of Ag, 1990). I have nearly 12 years of experience in association management. I have also worked for the State of Montana as a public land manager and as a range conservationist. Much of my professional career has been spent working with federal and state agencies, conservation and wildlife organizations, and livestock producers to resolve grazing and other natural resource-based issues. Through the years I have worked hand-in-hand with many of the SRM leaders and staff to improve the understanding and, cooperation of, partnerships with land and wildlife managers, researchers, and livestock producers.

I am so very appreciative of the opportunity the current SRM leadership has given me to work directly with the Society and all of its members, associates, and partners. I am looking forward to the challenges associated with the continued expansion of not only our membership base, but also in the value and services that SRM offers to anyone who holds an interest in the resources and landscapes the comprise that portion of our world that we all know as “rangeland”.



## 59th Annual Meeting, Vancouver, B.C. February 12 -17, 2006

### Travel to and from Canada - Some thoughts and needs.

Greg Tegart & Lynne Breese, Publicity Co-Chairs  
[Greg.Tegart@gov.bc.ca](mailto:Greg.Tegart@gov.bc.ca) [jlbreese@prinet.net](mailto:jlbreese@prinet.net)

If you are a guest from outside the USA, check with the Canadian Consulate in your country to receive the best information for your travel. Ask your own authorities what they will require upon your return and what items you will be able to bring back.

Here are a few reminders on what citizens of the USA may need or can expect when crossing the border.

1. **Identification** — Though not required at this time, a passport is best and may be required for some US government staff. The current intent is to require passports for air and sea travel, to Canada and Mexico, effective December 31, 2006 and via land travel effective December 31, 2007. Both countries require similar information i.e. proof of residency and citizenship with current photo identification.
  - **Citizenship** — certified copy of your birth certificate or baptismal certificate. Note: US laminated copies are not useful as the raised seal attribute of a certified copy can not be determined; a voter's registration card does not constitute proof of US citizenship. Permanent residents of the US who are not US citizens are advised to carry their alien registration receipt card; AKA: Green Card (US Form I-151 or Form I-551).
  - **Residency** — drivers license, state I.D. card, Military I.D, government issued I.D.
2. **Traveling with children under 18** — If a child is not traveling with both parents, a **notarized** note signed by the other parent or both parents, if neither is traveling with the child, is all but required. If you do not travel with that information you may be detained until the circumstances are fully assessed. You do not want to spend your time that way. The letter should state: "I acknowledge that my wife/husband/etc. is traveling out of the country with my son/daughter. He/she/they has my permission to do so." Sample letters are available on the websites or you may contact Greg or Lynne and we will happily get a sample to you.
  - Identification as above, except **children under 14** do not require photo I.D., but it would be prudent, and they must have a certified birth certificate.
3. **Further information** can be found at:
  - <http://help.customs.gov> — U.S. Customs & Border Protection
  - <http://gocanada.about.com> — Canadian travel site, Canada for Visitors
4. **Typical Border questions** at Canada Customs are:
  - What is your nationality and residency?
  - What is the nature of your trip?
  - How long will you be in the country?
  - Do you have anything to declare (food, alcohol, firearms, etc)?

And sometimes you hear:

- Are you transporting large amounts of currency (\$10,000 +)?
- Do you have a criminal record?
- Where will you be staying? Do you have reservations?
- Can you provide **proof** of your nationality and residency?

PS: Be honest and concise with your responses. Offering more information may seem right or nice, but is not necessary and may mean more questions. (Voices of experience!!)

5. **At the Airport**, expect to be asked to prove your residency and nationality when you check in. If you can not, you will scramble to get documents in time to catch the flight or rebook your flight (voice of experience, again!). You will go through security and customs, so allow time. Security is metal sensitive, so take it off—even jewelry! Do not carry knives, corkscrews, etc; there is a list at the entrance way. The extra

screening caused by metal devices is enlightening, and you could still get that honor via the random selection route.

6. **On your return**, expect a similar process plus the declaration of what you bring back. If you have specialized equipment, new digital camera for example, take the time to have US customs provide you with verification that you brought it from home or have proof of same.
7. **GST**: Canadians have the “pleasure” of paying 7% for all goods and services. Fortunately it applies only to Canadians so, those who are not Canadian, ensure you get the papers to recover the GST you paid out. Yes, that does mean you pay it first, so keep your receipts and recover it on your return home. The application form is included in the booklet *Tax Refund for Visitors to Canada*. It's widely available or you can contact the Visitor Rebate Program at 1-800-668-4748 (within Canada) or 902-432-5608 (outside Canada) or <http://www.cra-arc.gc.ca/tax/nonresidents/visitors/vrp-e.html> . This rebate does not apply to the provincial sales tax or the accommodation tax.
8. **Bringing goods to the convention**: Arrangements have been made with Paul Griggs of Events on the Move. Please contact the Denver office if you need more information now, or wait a bit and we will get those specifics out to you.

All in all do not be daunted – getting to and from Canada and the USA is a pretty painless and easy procedure. Have your identification ready, relax and you will be across in no time, and ready for stimulating programs, enjoyable activities, renewed friendships and fun!

Please visit the SRM website, <http://www.rangelands.org/srm.shtml> click on our identifier and follow the paths for more information about the meeting and the Vancouver area. The web site will be updated regularly and is a key resource for program details, registration and activities. Registration information will also be in the *Pre-Convention Trail Boss* that will come your way early this fall.



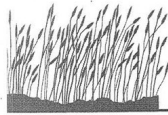
## Silent Auction Takes a Vacation in 2006

The silent auction to support the SRM Endowment Fund, a prominent feature of annual meetings of the Society, began with the 50<sup>th</sup> Annual Meeting at Rapid City in 1997. The event has been staged every year since, with the exceptions of Guadalajara in 1998 and Kona in 2001. These exceptions were partly due to the relative difficulty of dealing with customs and transporting auction items long distances. More importantly, they served to keep the auctions from becoming commonplace.

There have now been four successive auctions held since Kona (KC in 02, Casper in 03, SLC in 04, and Fort Worth in 05). These have all been successful, but many members of the Endowment Fund Board of Directors, the sponsoring body of the auction, are concerned that it is past time that the ‘auction take a vacation’ in order to preserve its appeal as a convention feature. Therefore, the Board advises all those who have supported the auction in the past, as donors, bidders or workers, that there will be no silent auction at Vancouver in 2006. Members of the Board urge everyone concerned to keep their interest and support on tap until the auction resumes in a future year. Most likely that will be at Reno in 2007, although the enabling decision has not yet been made.

—**Kendall Johnson**, Chair  
Endowment Fund Board of Directors





# Great Plains Research

an interdisciplinary journal of sciences for the heartland

Center for Great Plains Studies, University of Nebraska-Lincoln  
Dr. James Stubbendieck, Director

Agronomy  
 Anthropology  
 Archeology  
 Biology  
 Biochemistry  
 Biodiversity  
 Biotechnology  
 Botany  
 Chemistry  
 Climatology  
 Conservation Biology  
 Ecology  
 Economics  
 Entomology  
 Environmental Studies  
 Family and Consumer  
 Sciences  
 Genetics  
 Geography



Geology  
 Grassland Studies  
 History of Science  
 Horticulture  
 Law  
 Natural Resources  
 Paleontology  
 Physics  
 Physiology  
 Plant Pathology  
 Political Science  
 Prairie Ecosystems  
 Psychology  
 Rangeland Studies  
 Sociology  
 Soil Science  
 Statistics  
 Water Issues  
 Zoology

## Call for Manuscripts

*Great Plains Research*, a biannual, multidisciplinary, international journal of science published by the Center for Great Plains Studies, University of Nebraska-Lincoln, features peer-reviewed articles on original research, creative syntheses of important new scientific advances, and reviews of books relevant to the Great Plains.

Special issues: Climate Change (1991), Law (1992), Environmental Issues (1993), Environment and Population Change in Canada (1994), Native Americans (1994), Politics (1996), Wetlands (1998), Grasslands (1999), Latinos (2000), and Bison (2001).

The editor of *Great Plains Research* is currently soliciting manuscripts on important research results and synthetic reviews of critical scientific issues for the Great Plains.

At this time, page charges are completely subsidized by the Center for Great Plains Studies.

For **INSTRUCTIONS TO AUTHORS**, discussion of potential articles, or subscription information, consult webpage (<http://www.unl.edu/plains>) or contact the editorial office at: Dr. Robert F. Diffendal, Jr, Editor, *Great Plains Research*, Professor Emeritus, School of Natural Resources (402) 472-7546, University of Nebraska-Lincoln, 1155 Q Street, 404 Hewitt Place, P.O. Box 880246, Lincoln, NE 68588-0246, e-mail: [rfd@unl.edu](mailto:rfd@unl.edu)

## Free Books from Tri-Societies

We are reducing inventory and inviting members to share older titles with those in need, or for themselves. These books are free, you pay only the shipping costs by providing us with a DHL, FedEx or UPS number, or you can arrange pick-up at headquarters.

For an order form and list of titles: [www.asa-cssa-sssa.org/publications/pdf/FreeTitleOffer.pdf](http://www.asa-cssa-sssa.org/publications/pdf/FreeTitleOffer.pdf)

### SRM Members Resource News

**Managing Editor:**

Jason Campbell  
 10030 W. 27th Ave.  
 Wheat Ridge, CO 80215-6601  
 Phone: 303-986-3309  
 Fax: 303-986-3892

**Production Editor:**

Patty Rich  
 Phone: 303-816-7389  
 Fax: 303-816-7389

**e-mail addresses:**

**K. Jason Campbell**  
[kjcampbell@rangelands.org](mailto:kjcampbell@rangelands.org)

**Ann Harris:**  
[amharris@rangelands.org](mailto:amharris@rangelands.org)

**Mary Moser**  
[mmoser@rangelands.org](mailto:mmoser@rangelands.org)

**Doug Powell**  
[dpowell@rangelands.org](mailto:dpowell@rangelands.org)

**Lesley Radtke:**

[lrادتke@rangelands.org](mailto:lrادتke@rangelands.org)

**Patty Rich:**

[prich@rangelands.org](mailto:prich@rangelands.org)

**Vicky Skiff:**

[vsriff@rangelands.org](mailto:vsriff@rangelands.org)

**Home Page:**

[www.rangelands.org](http://www.rangelands.org)

---

---

## Undergraduate Student Paper Session

---

**This notice represents a CALL FOR PAPERS  
Undergraduate–Student Paper Session  
for the 2006 Annual Meeting  
Vancouver, British Columbia, Canada  
February 11–17**

The undergraduate papers tend to be very diverse in both subject area and nature, spanning the realm of scientific investigation to observations from work experiences. The experience gained from presenting a paper can be valuable as students either continue with graduate work or go into the work force where presentation skills are always important. The abstracts should follow the same format as shown on the web site for volunteer paper submissions <http://www.rangelands.org> <http://abstracts.co.allenpress.com/rama/index.html>).

However, do not submit them to, rather send them directly to me (Val Anderson) in that format. The deadline for this years title and abstract submissions is October 21, 2005. Please send all submissions to: Dr. Val Anderson, Dept. Integrative Biology Brigham Young University Provo, Utah 84602 [val\\_anderson@byu.edu](mailto:val_anderson@byu.edu) I will submit the entire session of papers as a unit and will send notification and instructions for presentations to students by mid November. If you have any questions, suggestions or concerns regarding this session, please feel free to contact Dr. Anderson at the address above or phone (801) 422-3527

---

---

## Bay Area

### Grasslands Management Conference

#### Building Partnerships for Grazing Land Stewardship

**Location: The Presidio Trust's Officers' Club, San Francisco**

**September 15 Conference, September 16 Field Tours**

Come join ranchers, grassland ecologists, rangeland management specialists, open space managers, policy makers, wildlife experts, agency program managers, recreation planners and others to learn how livestock grazing is used on public and private lands to achieve livestock production and biodiversity goals. Come learn how prescribed grazing and re-introduction of managed grazing is enhancing "listed:" species, how the private landowners and public agency land managers are working together to maintain Bay Area grasslands for multiple uses, and to see how conservation practices really work!

**Keynote speaker:** Mike Chrisman, **Secretary of Resources**

**Final Speaker:** Barry Perryman, **Ph.D. Range Ecology**

For More Information Visit: [www.californiagrazing.org](http://www.californiagrazing.org)

Note: Prices are reduced thanks to sponsorship!!!

**\$75 for individuals and \$50 for students**

---

---

## Lost Resources

---

**D. Morris Blaylock**, a SRM member since 1963, has passed away. He was a member of the Oklahoma Section. He resided at 1412 E. Proctor Ave., Weatherford, Oklahoma 73096-4220.

**Ray Margo**, long-time member of the Society for Range Management and the Texas Section, passed away. If you wish to correspond with family members the address is R.T. Margo Jr. Cattle Co., PO Box 57, Santa Elena, Texas 78591-0057.

### Assistant/Associate Professor Position

Twelve-month, tenure-track, assistant/associate professor position in the area of human dimensions, with a strong focus in natural resources recreation and tourism (NRRT). Duties will be teaching and research. Evidence of research productivity, ability to attract external research funding, and experience in teaching are required. Position requires an average of 3 semester classes per year, to include undergraduate and/or graduate courses in human dimensions, NRRT, and one other course in the candidate's speciality. The candidate must have a Ph.D., at least one degree in natural resources management field, and appropriate training and experience in the areas of human dimensions and/or NRRT. The person must work cooperatively among the forestry, fisheries, NRRT, water and soil resources, and wildlife disciplines in the Daniel B. Warnell School of Forest Resources ([www.forestry.uga.edu](http://www.forestry.uga.edu)), and will be expected to help extend the results of their research through collaboration with the School's outreach and service faculty. To ensure full consideration, application must be received by 14 October 2005.

The University of Georgia is an Equal Opportunity/Affirmative Action Institution.

### Assistant University Extension Educator Sustainable Management of Rangeland Resources UW Cooperative Extension Service

**Position # 0177 located in: Carbon County, Rawlins, Wyoming**

*Screening will begin October 14, 2005*

Salary: commensurate with education, experience & availability of funds.

Master's degree required, one degree in range management or natural resources.

Applicants are required to submit:

Letter of intent, current resume, copies of transcripts, four letters of reference, completed UW applications. ([www.uwyo.edu/HR](http://www.uwyo.edu/HR)), and a 2-3 page statement regarding your perspective of the programmatic, evaluative, and leadership responsibilities of an Extension educator in the field of Range Management in an area position with responsibility for implementing educational programs in a two county area.

IMPORTANT: see website for entire position description  
[www.uwyo.edu/ces/readnote.htm](http://www.uwyo.edu/ces/readnote.htm)

Send completed application packet to:  
Cooperative Extension Service  
1000 E. University Ave., Dept. 3354  
Laramie, WY 82071  
(307) 766-3562  
*UW is an EO/AA employer*

### Geo-spatial and Range Sciences Research Program

**POSITION TITLE:** Geo-spatial Rangeland Research Scientist  
(Postdoctoral Research Associate)

**DEPARTMENT:** GIS Training and Research Center, Idaho State University

**CLOSING DATE:** October 1, 2005 or until filled.

**DESCRIPTION:** The GIS Training and Research Center at Idaho State University in Pocatello, ID is seeking **two** full-time post-doctoral research associates (2-3 years) to conduct research related to "Impact of Temporal Land Cover Changes in Southeastern Idaho Rangelands" and "Forecasting Rangeland Condition with GIS in Southeastern Idaho", respectively. The successful candidates will become part of the GIS Center's rangeland research program and participate as integral team members with other Geo-spatial, range science, and ecological experts. It is also expected that they will work with and supervise research activities of graduate and undergraduate student assistants working on their respective projects. Responsibilities of the positions include participating in research focus/goal planning, pursuing external research opportunities, collecting field environmental and vegetation data, satellite image processing, data analysis/modeling, and experimental design. Documenting research techniques, writing research reports, technical papers and publications is also required. There is a possibility of extending the duration of these positions depending upon availability of funding and performance of the individual. Salary will be commensurate with qualifications and experience (\$37,000-\$40,000 annually). In addition, the GIS Training and Research Center offers an advanced training package and health benefits. For additional information about the GIS Center and its rangeland research program, visit <http://giscenter.isu.edu>.

**MINIMUM QUALIFICATIONS:** A Ph.D. in geotechnology, range science, ecology, or related field. Strong background/work experience with remote sensing, GIS, GPS, and image processing is required, including proficiency with ArcGIS 9.X. A thorough understanding of one or more of the following fields: range science, fire ecology, and/or field biology is also required. The applicants are expected to have a working knowledge in one or more of the following areas: image classification, fuzzy classification, neural networks, range/habitat assessment. Strong written and oral communication skills are also required.

**PREFERRED QUALIFICATIONS:** Experience or knowledge in grant writing; previous experience in writing technical papers and publications is highly desired.

**TO APPLY:** Interested candidates should send an application packet containing a letter of application, current resume/CV, academic transcripts (copy), and three letters of reference to:

Keith T. Weber, GIS Director, ISU  
GIS Training and Research Center  
Idaho State University  
Campus Box 8130  
Pocatello, Idaho 83209-8130, USA  
Phone: (208) 282-3606  
FAX: (208) 282-5802  
E-mail: [webekeit@isu.edu](mailto:webekeit@isu.edu)

*ISU is an equal opportunity employer*

**Assistant Professor — SOIL FERTILITY/NUTRIENT  
CYCLING SPECIALIST  
UW Position #1838**

The Department of Renewable Resources at the University of Wyoming is accepting applications for a twelvemonth tenure track, 50% Extension soil fertility service with state-wide responsibility and 50% Applied Research position beginning February 15,2006 or when a suitable candidate is identified.

**RESPONSIBILITIES:** We are seeking an individual who will provide leadership for an innovative Extension Education/Outreach/Research program that addresses soil fertility and vegetation nutrient management issues relevant to agricultural (crop, forest and range) and disturbed lands at plot, field and/or landscape levels throughout Wyoming. Please see <http://uwadmnweb.uwyo.edu/hremloyment2/AcadProfSum.sub.asp#ag> for more complete information

**QUALIFICATIONS:** Minimum qualifications include a Ph.D. degree conferred by time of appointment in Soil Science, or a closely related field with an emphasis in soil nutrient cycling, biogeochemistry, or plant-soil interactions. Excellent written and oral communication skills and the ability to succeed in a team-oriented environment are essential. Post-doctoral and teaching experience are desirable.

**SALARY:** Salary will be commensurate with qualifications and experience and is based on a 12 month appointment. Excellent benefit package includes: retirement program, medical, life and disability insurance, 22 days vacation/yr, and sabbatical leave program.

**APPLICATION PROCEDURE:** Screening of applicants will begin October 18,2005 and will continue until a suitable candidate is selected. Qualified persons are requested to send an application that includes a statement of future goals and philosophy in Extension Education and Research related to the position; a curriculum vita, transcripts of all university degrees, examples of written products (refereed publications, bulletins, proceedings, abstracts, reports, grants, etc.) which demonstrate research capabilities or technology transfer successes and the names, addresses, telephone numbers and e-mail addresses of four references to:

Ramona P. (Kelli) Belden, Search Committee Chair  
Department of Renewable Resources  
1000 E. University Ave.  
University of Wyoming  
Laramie, WY 82071-3354

For additional information contact Ms. Belden at 307 766-2135 ([SoilTest@uwyo.edu](mailto:SoilTest@uwyo.edu))

See: <http://uwadmnweb.uwyo.edu/RenewableResources/> for more information about the Renewable Resources Department and the University of Wyoming.

UW IS AN EQUAL OPPORTUNITY/EQUAL ACCESS/AFFIRMATIVE  
ACTION UNIVERSITY

**Revised Wildlands Worker's  
Handbook  
is Now Available.**

This final revision now contains  
150 pages and 27 chapters.

Highly acclaimed by both professors and field workers, it encapsulates in one book almost all you need to know in working on the rangelands. It includes all the formulas and charts to plan and develop water and move it to where you need it. Also how-to fence, cattleguards, corrals, competition control, seeding, etc.

**Write Jim Brunner, 391 O'Gara St,  
Medford, OR 97501, phone (541) 734-8564, or  
email**

[jimbrunner1@hotmail.com](mailto:jimbrunner1@hotmail.com)

Price still \$25.00 plus  
\$2.00 shipping and handling.





# New Member Application

(Updated Jan. 23, 2005)

Society for Range Management  
10030 West 27<sup>th</sup> Avenue  
Wheat Ridge, CO 80215  
Phone: 303-986-3309  
Fax: 303-986-3892  
Email: LRadtke@rangelands.org

\* (Please Print or Type) **First Name** \_\_\_\_\_ **MI** \_\_\_\_\_ **\*Last Name** \_\_\_\_\_

Nickname (Informal) \_\_\_\_\_

Job Title \_\_\_\_\_ Certifications:  CRMC  CPRM  Other \_\_\_\_\_

\* Male \* Female Date of birth: M \_\_\_ D \_\_\_ Y \_\_\_

**\*Company/Organization/Business Affiliation/(Students MUST put College or University)**

<b>*Business Address (Student School Address)</b>	<b>*Home Street Address (Student Permanent Home)</b>
_____	_____
Suite/Apt# _____	Suite/Apt# _____
_____	_____
City _____ State/Province _____	City _____ State/Province _____
_____	_____
Zip/Postal Code _____ Country _____	Zip/Postal Code _____ Country _____

<b>*Business Phone (Include Area Code)</b>	<b>*Home Phone (Include Area Code)</b>
_____	_____
Business Fax (Include Area Code)	Home Fax (Include Area Code)
_____	_____
<b>* Email Address (to receive monthly Member Resource News)</b>	<b>* 2<sup>nd</sup> Email Address</b>
_____	_____

Please mail my publications to my:  Business (School Address)  Home (Permanent Home Address) If yes, when \_\_\_\_\_

Have you ever been a member of SRM?  Yes  No

How did you hear about SRM? \_\_\_\_\_ Name of member that recruited you \_\_\_\_\_

**MEMBERSHIP CLASSIFICATION** (Amount includes the Primary section) (\* See reverse side for dues amount)

- Regular \$85  Student \$35  Institutional \$205  Commercial \$525  \* Life  \* Life Family  \*Additional Family

Student Information (Applicants for Student Membership: please complete the following information and provide proof of **current FULLTIME** registration for student status) For questions on status contact Lesley at [LRadtke@rangelands.org](mailto:LRadtke@rangelands.org) or 303-986-3309

- High School:  Freshman  Sophomore  Junior  Senior
- College:  Freshman  Sophomore  Junior  Senior
- Graduate:  Year 1  Year 2  Year 3  Year 4  Year 5  Year 6

**SECTION AFFILIATION** (See next page for Sections)

SRM members must choose a Section affiliation. Section affiliation is determined by geographical region, but members may be affiliated with any and as many Sections as desired upon payment of additional Section dues. If you wish to belong to more than one Section, please contact the SRM office at (303) 986-3309 for additional dues amount.

**\*Primary Section Affiliation (1 only)** \_\_\_\_\_ Additional Sections (\$5 ea) \_\_\_\_\_

\* = Required Fields  Please check box if you do not want your contact information printed in the SRM Member Directory

## **OPTIONAL SUBSCRIPTIONS**

Members receive six issues of *Rangelands* and 12 issues of *Member Resource News* (electronic delivery only via email) with your paid membership. Members may opt to receive 6 issues of the *Rangeland Ecology and Management* for \$25.00 per year.

I would like to receive the *Rangeland Ecology and Management*  Yes  No

## **PAYMENT OPTIONS**

Payment must be made in U.S. funds drawn on a U.S. bank. Please make checks/money orders payable to: **Society For Range Management**

Dues \$ \_\_\_\_\_ Optional Subscriptions \$ \_\_\_\_\_ TOTAL AMOUNT ENCLOSED \$ \_\_\_\_\_

Credit Card Payment:  Visa  MasterCard  American Express  Discover

\_\_\_\_\_  
Name as it appears on credit card

\_\_\_\_\_  
Card Number

\_\_\_\_\_  
Expiration Date

\_\_\_\_\_  
Signature (REQUIRED)

---

---

## **MEMBERSHIP CLASSIFICATION**

**Regular**—Basic individual membership, includes *Rangelands* and the *Member Resource News*, voting privileges, committee service, and nomination & election to any office.

**Additional Family**—Individuals of same household desiring more than one Regular membership. Families receive only one set of publications, but each member retains all rights & privileges of Regular member.

**Student**—Full-time students (high school through graduate school). Not eligible to hold office. Must succeed to different class of membership in the calendar year following termination of course of study.

**Life**—Same as Regular with one-time dues payment.

**Life Family**—Individuals of same family desiring more than one Life membership.

**Commercial**—Businesses, proprietorships, individuals or other entities organized for profit. Must designate a representative. Listed in Society publications.

**Institutional**—Institutions or other entities not organized for profit (i.e., Federal agencies, livestock organizations, Indian tribes, universities). Membership is in institutions name with a designated representative. Not eligible to hold office. Listed in Society publications

---

---

## **SCHEDULE OF DUES (As of Jan. 1, 2005)**

**Regular**— \$85 (all Sections except Mexico/Unsectioned) \***Life**—\$1,500 (Call SRM office for installment plan option)

\$80 (Mexico/Unsectioned)

\***Life Family**—\$1,750 (Call SRM office for installment plan option)

\***Additional Family**— \$35 (all Sections except Mexico/Unsectioned, must accompany another Regular membership in same household)

**Student** – \$35 (all Sections except Mexico/Unsectioned)

**Commercial**—\$525 (includes Section

**Institutional** – \$205 (includes Section)

---

---

## **SECTIONS**

### **Arizona**

**California-Pacific** (California, Hawaii, and all the lands in the Pacific not currently associated with the following: Mexico and Pacific Northwest Sections of SRM, the state of Alaska, Australia),

### **Colorado**

### **Florida**

### **Idaho**

**International Mountain** (Alberta, Western Montana)

### **Kansas**

### **Mexico**

**Nat'l Capital** (Connecticut, Delaware, District of Columbia, Maine, Maryland, Massachusetts, New Hampshire, New Jersey, New York, Pennsylvania, Rhode Island, Vermont, Virginia, West Virginia)

### **Nebraska**

### **Nevada**

### **New Mexico**

**North Central** (Illinois, Indiana, Iowa, Michigan, Minnesota, Ohio, Ontario, Quebec, Wisconsin)

**Northern Great Plains** (Eastern Montana, Manitoba, North Dakota, Saskatchewan)

### **Oklahoma**

**Pacific Northwest** (British Columbia, Oregon, Washington)

### **South Dakota**

**Southern** (Alabama, Arkansas, Georgia, Kentucky, Louisiana, Mississippi, Missouri, North Carolina, South Carolina, Tennessee)

### **Texas**

### **Utah**

### **Wyoming**

**Unsectioned** (Alaska, Foreign)

---

---

## Membership Stats

---

SRM welcomes its new members. Following is a list of new members, their section and recruiter for July, through August 14, 2005

<u>Member</u>	<u>Section</u>	<u>Recruited By</u>
Jared L. Buono	AZ	
Brandon Bishop	AZ	
John Gerlach	Cal-Pac	John Stechman
Genyce Hanson	ID	Karen Launchbaugh
Erik Broeder	IM	
James Ungerer	KS	Doug Spencer
Rylan Everett	KS	Doug Spencer
Jared Nelson	KS	Doug Spencer
Jamie Holopirek	KS	Tim Miller
Jane Koger	KS	
William Perry	NCS	
Kerry Hecker	NGP	Michael Champion
Tara Mulhern Davidson	NGP	
Carroll Nelson	NGP	
Jeff Cornell	NM	
Brian Hurd	NM	Glenn Mason
Gwendolyn Alsrich	NM	John Buckhouse
Rusty Norrie	OK	
Jeremy James	PNW	
Molly Kirk	PNW	
Kyle Kelsey	SD	
Tina Neubauer	TX	Jason Morris
James Jackson	TX	
Conrad Masterson	TX	
Michael Dyke	TX	Dr. Robert Knight
Amber Wooten	TX	

### Moving? New E-mail Address?

This is a reminder that each of you can make your own changes, 24/7, to your member data record by going online. You can change name, company or school, address (home and business), phone #'s, fax #' and email address'.

Go to [www.rangelands.org](http://www.rangelands.org)

Click "Member Login" button to the right

Click red "click here"

Click "yes" in the gray box

Your login is your SRM member ID#

Your password, unless changed, is your last name followed by the number 1

On the Welcome page click your name in the box to the left

This will take you to your member record, which you can then edit.

You **cannot** change your primary section or your member type. These changes can only be done from the SRM office. Please email or call about these changes.

---



---

## SRM Section Calendar

---

Arizona	Fall Board of Directors Meeting	November 4, 2005	Tucson, AZ
California-Pacific	Section Meeting	November 3-5, 2005	Somona County
Colorado	2005 Annual Meeting	December 7-9, 2005	Fort Collins, CO
Int'l Mountain	2005 Fall Meeting	October 14-15, 2005	Pincher Creek, AB
Kansas	2005 Fall Meeting	September 27-28, 2005	Wichita, KS
Nebraska	2005 Fall Meeting	October 6-7, 2005	Valentine, NE
Nevada	2006 Winter Meeting	January 13-14, 2006	Pahrump, NV
New Mexico	2006 Winter Meeting	January 10-12, 2006	Las Cruces, NM
Oklahoma	2005 Annual Meeting	September 22-23, 2005	El Reno, OK
Pacific-Northwest	2005 Annual Fall Meeting	October 14-15, 2005	Pincher Creek, AB
South Dakota	2005 Annual Meeting	October 6-7, 2005	Spearfish, SD
Texas	2005 Annual Meeting	October 4-7	South Padre Island, TX
Utah	2005 Annual Winter Meeting	November 3-4, 2005	Midway, UT
Wyoming	2005 Annual Meeting	November 30-- December 1	Casper, WY

For complete information on meeting sites and dates go to the SRM web site at [rangelands.org](http://rangelands.org)