



Rangeland News

Society for Range Management

Volume 61, Number 4

President's Message

Allen Rasmussen, President

I would like to add my thanks to the 2008 annual meeting team. It is impressive to see how our members come together to provide an outstanding meeting. From my perspective, it is a great way to start the year. I would also like to take this opportunity to tell you what the Board of Directors is

working on this year to help achieve our vision.

Our SRM vision is to have well trained motivated professionals applying sound science to ensure productive, sustainable rangeland ecosystems. To achieve this vision, our mission is to promote the professional development and continuing education of professionals to ensure the stewardship of our rangelands. These provide the guiding directions for our sense of purpose and the reasons we exist as a professional society.

Dennis Phillippi has often said we are a society of practitioners, researchers and educators. All three are critical to our vision. Without the practitioner there is no management; without the researcher, science declines; and without the educator, learning is only experiential.

We can only achieve our vision if we work together.

To accomplish this vision and mission it means our members must possess three critical characteristics. You must be a life long learner, be a critical thinker, and be a leader. If you do not continually learn, you cannot keep up with the science and its application. If you are not a critical thinker, you may accept every idea presented, even those that should be rejected. You show leadership by learning the new science, having the ability to critically evaluate ideas, and explaining why a specific direction is followed, ensuring the stewardship of our rangelands. So we must provide access to different educational opportunities to help you meet our mission.

This year the Board of

(Continued on page 2)

Inside this issue:

<i>EVP Update</i>	2
<i>CPED Description</i>	3
<i>Native Plants and Invasive Weeds</i>	4
<i>REM & Rangelands Issue Alerts</i>	4
<i>Lost Resources</i>	5
<i>2008 Bags</i>	5
<i>CPED Request for Proposals</i>	6
<i>New Members</i>	7
<i>Position Announcements</i>	8
<i>CPRM Exam</i>	10
<i>CEU Courses</i>	11
<i>Upcoming Events</i>	12
<i>Annual Meeting Symposia Call</i>	12

Staff email addresses:

John Tanaka:
jtanka@rangelands.org

Linda Coates-Markle:
lmarkle@rangelands.org

Cindy McArthur:
cmcarthur@rangelands.org

Mary Moser:
mmoser@rangelands.org

Lesley Radtke:
lrادتke@rangelands.org

Vicky Trujillo:
vtrujillo@rangelands.org

Caitlin Harris:
caitlin@rangelands.org

Newsletter News

This is the first attempt at a change in the look and function of Rangeland News. We plan on producing a full-color version for distribution from our website (this version). We will begin producing a second version as text-only that will also be available from the website and will be printed for our members that either do not have

email or choose not to provide their email to SRM.

We really want you to receive all the information in whatever format you want it. If you do not provide your email address to SRM, you do miss some information in our Range Flashes that are only sent out via email and contain time-sensitive information. These sometimes

get posted on the website, but not always depending on the timing.

Let me know if you have any comments. Thanks!

Executive Vice President

President's Message (continued from page 1)

(Continued from page 1)

Directors will be working with all of you on two key areas that relate to our vision and mission. First, we are working to improve our ability to provide science based information to others. In this area, we will continually work to maintain the quality of our annual meetings. These meetings are the optimal place for our members to learn about new ideas and alternatives that can help them improve their rangeland stewardship. We also recognize some educational development alternatives are needed to deal with changes in our profession and the agencies responsible for many of our rangelands. To address this, we are going to focus on more regional workshops that can be held at the section level. Last fall, our first attempt was the workshop on the use of "Ecological Site Descriptions" and their use to improve sage grouse management. It was very successful. We will work to continue this model and ensure we have more regional workshops that can meet your technical needs. Please see the call for CPED proposals for details (page 6).

The second area the Board is focusing on is to improve the value of your membership. In this area, the Certified Professional Rangeland manager was started several years ago. It verifies an educational background on rangelands and that they have accepted a professional code of ethics. It also provides a great mechanism to enable an individual's continuing education is recorded. We will continue to work with others to improve how this is implemented to ensure it adds a value to those who hold this certification. We are also working with our other professional societies to help agencies understand how professional societies help maintain professional competence and how those who participate in leadership roles help solve current issues in management.



We are also working to hire a new EVP who would be in place by next fall. The Committee has made great progress and is beginning to narrow the list. We have also established a new task force looking at membership. This task force will have representation from all the areas of our society to see what we should be accomplishing to improve services to our members.

This is shaping up to be an exciting year and I would like to thank the Denver staff for their continual help transitioning through this period and particularly to John Tanaka for stepping in as the interim EVP. Enjoy your spring!



Executive Vice President Update

John Tanaka, Interim EVP

Things are hoppin' here in the Society and not just because Easter was here. I was told that there would be a lull after the Annual Meeting ... I'm still waiting. That's a good thing as there are happenings on several fronts.

Allen Rasmussen, Cindy McArthur, and I were in Washington, DC in late February meeting with departments, agencies, NGO's, and other partners. We focused on cooperative conservation opportunities, bringing value to our Certified Professional in Rangeland Management (CPRM) members, membership and participation in professional societies, our agency liaison positions, joint educational opportunities through our Center for Professional Education and Development (CPED), and support for ecological site descriptions, completing soil surveys, and the interagency rangeland inventory pilot project. Different Board members will be going back to DC and will do follow-up. The Executive Committee will be going back in May.

An accreditation visitation team visited Texas Tech University's Department of Natural Resource Management to view their Range Management degree. Mike Borman, Ken Fulgham, Jeff Burwell, and I had a great visit (other than the snow). The team is preparing their report to the SRM Accreditation Panel who will make their recommendation to the Board of Directors. The Board should act on the recommenda-

tion at their summer meeting. As you get this, there will be another visit going on at Utah State University with 3 more in the works for next fall. We WILL be doing more to highlight those programs that have gone through our accreditation program and we do encourage more colleges and universities to take this important step.

The CPED request for proposals is out. We sent out a RangeFlash earlier announcing the program, have posted it on our website, and included it in this newsletter. Our goal is to provide educational opportunities outside of our Annual Meeting, at regional locations, and in the field. Please take a look at it and submit your ideas.

We will be co-sponsoring a workshop in Wyoming with the Agricultural Research Service on climate change that also highlights their research in this area. It is scheduled for Sept. 4-5, 2008. Put the dates on your calendar and watch for more information.

We are working closely with the Advisory Council to identify locations for our 2011, 2012, and 2013 Annual Meetings. I'll report to you what they and the Board decide to do as soon as I know.

The Board and committees continue to follow up on items from Louisville. Sections are letting us know when their summer meetings are and everyone is getting ready for the upcoming field season – Spring is here!

Center for Professional Education and Development (CPED)

In this issue of the newsletter (page 6) you will find the Request for Proposals for Center projects. While the concept has been floating around for a few years and the Board of Directors approved the concept last summer, I thought it would be worthwhile to put a brief description of what it is all about here in the newsletter. Much of this information comes from a concept paper and presentation put together by Linda Coates-Markle, Roy Roath, and Jason Campbell along with other members. This description takes liberally from those sources.

Statement of Intent

SRM has created a vehicle to enhance, develop and coordinate life-long educational opportunities for rangeland management professionals. The target audience for these educational opportunities would be professionals representing the federal agencies, universities, producers, consultants, and others within rangeland management and other related professions at all stages of their careers. Opportunities would attend to specific issue-based training and professional development needs in a timely and responsive manner. Activities would be designed to build bridges in communication, management concepts and applications across the rangeland management profession and the SRM membership. Advantages would include training across educational, occupational and membership entities, along with networking opportunities, improved working relations in the field, and cost savings from combined training.

Assumptions

- * All professionals have a need for high quality on-the-ground training.
- * Workforce replacements need to be recruited, trained and retained through professional development opportunities.
- * Funding sources are becoming more restrictive for in-house training and/or on-the-ground experience.
- * More universities and agencies are focusing on cost-effective distance-learning techniques.
- * Young professionals and students are looking for on-the-ground mentoring opportunities with experienced professionals.

Objectives

- * To identify training and educational needs, and to coordinate needs with credible educators, instructors, practitioners, and researchers.
- * To coordinate and facilitate state-of-the-art training to all groups and age classes on a regional scale.
- * To facilitate on-the-ground mentoring for new recruits and young professionals.
- * To provide a one-stop source for easily-accessible information on training, educational, and professional development opportunities.
- * To provide a library of training materials that is available and accessible.

SRM intends to identify a cadre of instructors from among our membership who would represent the wealth and diversity within our profession. The training sessions would be targeted at an average of 50 students per workshop. Locations will be selected based on the greatest regional need and the cost-effectiveness for students to attend. We expect that most trainings would be about 4 days with an equal mix of classroom and field-based training.

SRM intends to be the catalyst for these training opportunities. We will actively encourage and seek partnerships with other organizations for training opportunities, trainers, funding, and students. Most training opportunities will require tuition or a registration fee that will vary based on sponsorships. SRM's intention is to build a fund through time that will allow the CPED to become self-sustaining. At this point in time, the CPED will be managed by the SRM staff and Board of Directors. We expect all aspects of the program to continually evolve as needs and opportunities arise.

April Showers Bring...Native Plants and Invasive Weeds!?

Cindy McArthur, SRM Forest Service Liaison

As Forest Service Liaison to the Society for Range Management, I wanted to update you on two very important programs. The first is the new Forest Service Native Plant Materials Policy. The second is a summary from the National Invasive Weeds Awareness Week that was recently held in Washington, D.C. Special thanks to Dr. Lawrence R. Stritch, National Botanist and Michael Ielmini, National Invasive Species Program Coordinator for submitting these articles.



Forest Service employees grow native seeds. Photo courtesy of Dr. Lawrence R. Stritch, FS National Botanist.



Cleaning and sorting native seeds for distribution to the field. Photo courtesy of Dr. Lawrence R. Stritch, FS National Botanist.

Native Plant Material Directive Released

Native plant communities are essential to ecosystem health. The Forest Service has been active in the development and use of native plants for decades; specifically reforestation, rangeland management, and watershed restoration. There have been major strides in genetics research; seed collection and storage, monitoring, and de-

signing appropriate management practices especially involving native trees.

Recognizing the need to maintain plant communities as fully functioning ecosystems, Chief Abigail Kimbell directed natural resource professionals from the National Forest System, State and Private Forestry, and Research and Development to develop an invasive species policy. This policy promotes the use of native plant materials within Forest Service lands. The native plant materials policy is designed as one of the components in the implementation of the Chief's priorities to combat invasive species and facilitate wildland restoration efforts. The policy's major points:

- Native plants are defined as all indigenous terrestrial and aquatic plant species that evolved naturally in a defined native ecosystem.
- Native plant materials will be the first choice in revegetation for restoration and rehabilitation of native ecosystems where timely natu-

(Continued on page 5)

REM and Rangelands Issue Alerts

Attention readers of Rangelands and Rangeland Ecology & Management: sign up now to receive an e-mail alert when the latest issue is available.

- * Go to www.srmjournals.org
- * Click the "Sign In" link near the top of the page
- * Enter your e-mail address and password (or click "Register" if you haven't yet)
- * Click the "My Alerts" link
- * Click on the box next to "Issue Alert" for Rangelands and/or Rangeland Ecology & Management
- * Click on the "Save Settings" button
- * You're done!

The next time a new issue is avail-

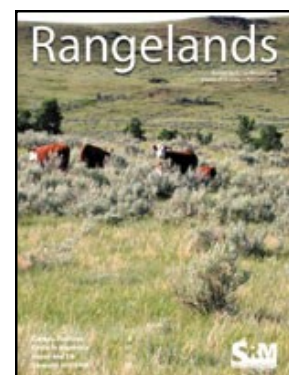


able online, you'll be among the first to know! Be sure to look for the new features available online:

- * Top 10 articles viewed last month
- * Rangeland Ecology & Management preprints (articles that

have been accepted but not yet published in print)

- * Science news headlines: the latest rangeland and ecological information from ScienceDaily



April Showers Bring... (continued from page 2)

(Continued from page 4)

ral regeneration of the native plant community will not occur.

- Non-native, non-invasive plant species may be used when:
 - Needed in emergency conditions to protect basic resource values.
 - As an interim, non-persistent measure designed to aid in the re-establishment of native plants.
 - When native plant materials are not available.
 - In permanently altered plant communities.
- Under no circumstances will non-native invasive plant species be used as plant material for restoration, rehabilitation or reconstruction of native ecosystems.
- Forest Service staff will use the best information available to choose genetically appropriate native plant materials for the site to be restored.
- It is recognized that a reliable supply of native plant materials, either as seed or other vegetative propagules is essential for the successful implementation of the native plant materials program.

This is direction that will be followed by all Forest Service units in the selection, development and procurement of native plant materials. The Forest Service will collaborate with

partners and other interested publics in the implementation of this policy. This benefits the public, seed and nursery industries and other partners and cooperators in providing uniformity in the selection, development and growing of native plant materials.

Additionally, the policy promotes revegetation of native ecosystems with the use of native plant materials so that those ecosystems are self-sustaining and provide improved habitat for a broad range of species including threatened, endangered and other rare species.

Lastly the policy encourages the forests and grasslands to cooperate with other federal agencies, states, tribes and other organizations in the selection of native plant species; identifying sources of genetically appropriate plant materials and in the grow-out of these species so that they are readily available in large quantities and economically feasible.

The Forest Service will collaborate with other federal agencies, states, tribes, and other interested organizations and publics as the process of selecting and developing native plant materials for revegetation, restoration and rehabilitation projects begins. For more information on this policy contact Larry Stritch, Forest Service National Botanist at lstritch@fs.fed.us.



The Ninth Annual National Invasive Weeds Awareness Week (NIWAW 9) was held in Washington, D.C. the week of February 24 to February 29, 2008 to bring people and groups from across the country together to focus national attention on the severe impacts caused by invasive weeds. Over 200 individuals and organizations interested in this issue participated in a series of events to help build on the success of NIWAW activities in previous years. NIWAW 9 events were designed to focus on the important roles the Federal government must play to help the U.S. deal with invasive weed problems. The agendas during the week provided ample time for attendees to meet with their Congressional delegations, individual federal agencies and each other. Attendees participated in discussions related to a number of key bills and acts related to invasive species management. NIWAW is planned and organized annually by the Invasive Weeds Awareness Coalition, a Washington D.C.-based coalition dedicated to increasing awareness of invasive weed problems and the associated research and management needs.

For More Information Regarding NIWAW, contact the Weed Science Society of America, Dr. Lee VanWychen, and (202) 408-5388 or visit the NIWAW website hosted by the North American Weed Management Association (www.nawma.org).

Lost Resources

Roberto Boo Blanca, Argentina
V.P. McConnell Los Angeles, CA



2008 Bags

We have 2 extra boxes of bags left from the 2008 meeting. If you would like any or all of them, you can pick them up at the Wheat Ridge office or pay for shipping.

Contact Lesley Radtke at:
LRadtke@rangelands.org.

Center for Professional Education and Development

2008 Request for Proposals Society for Range Management Center for Professional Education and Development

The Society for Range Management seeks proposals to conduct specific issue-based training and professional development activities in a timely and responsive manner. Activities should be designed to build bridges in communication, management concepts, and applications across the rangeland management profession and the SRM membership. We seek to include training across educational, occupational and membership entities; to provide networking opportunities; to improve working relations in the field; and to find cost savings from combined training. Preference will be given to proposals that include field-based training as a significant component of the course. Topics of particular interest include, but are not limited to, ecological site descriptions and their use in management, fire ecology, comparing tools for rangeland health monitoring, and process-based management. All proposal topic ideas will be fully considered.

Proposal:

Please submit no more than a 2 page pre-proposal on the activity being proposed, the target audience, the objectives of the activity, organizers and partners, location, and a preliminary agenda and budget.

Funding:

Funding proposals must come through SRM Sections and/or Committees and may include partnerships with other organizations. SRM has set aside up to \$10,000 as start-up loan funds and expects to fund 1 or 2 projects this fiscal year. Additional funds may become available, in which case more projects may be selected. The activity is expected to return those funds to SRM. Twenty-five (25%) of any profit will be returned to the host SRM Section or be put into a fund for SRM Committees. SRM Sections and Committees are expected to cooperate where appropriate.

The SRM office will assist with registration, advertising, meeting and hotel space negotiations, and on-site registration activities. The proposing Section will be responsible for the program and tours. Other items not covered here will be negotiated as part of the final proposal.

Submit the 2-page pre-proposal by mail or email to:

John Tanaka
Interim Executive Vice President
Society for Range Management
10030 West 27th Ave.
Wheat Ridge, CO 80215
jtanka@rangelands.org
(303) 986-3309—office
(541) 910-7035—cell

Pre-proposals are due by April 18, 2008. Applicants with selected pre-proposals will be asked to develop a full proposal.



Grazing management in riparian pastures during field day.

A Special Welcome to Our New Members

Member	Organization	City, ST	Section	Recruited by
Don Gabrick	Surprise, AZ	AZ & WY		
John Powley	University of Hawaii	Kaului, HI	Cal-Pac	
Rosalind Rowe	The Nature Conservancy	Barson Park, FL	FL	
Louis Bender	NM Cooperative Wildlife Research	Las Cruces, NM	NM	
Uma Karki	Auburn University	Auburn Univ., Al	SO	
Anna Lund	Texas A&M University	Kingville, TX	TX	Paula Maywald & Eric Grahmann
Dinesh Dhinga		Rohini, New Delhi India	UN	
Jeffrey Walton	Brigham Young University	Provo, UT	UT	

It's All About Range - We Support SRM!

We appreciate our business card supporters of SRM. This is our program to strengthen SRM while helping SRM provide better value to its members. For a very small fee (\$20 per month), you too can show that you support SRM while at the same time putting your name in front of 3,500 range-oriented people. Contact caitlin@rangelands.org for details!



SYNERGY RESOURCE SOLUTIONS, INC.

We count grass... and a whole lot more!

Jack D. Alexander III
CRMC, CPE-SC, NRC-TPP

5393 Hamm Rd
Belgrade, MT 59714
jack@countgrass.com

Office: 406-586-GRASS (4727)
Cell: 775-772-5123
Fax: 406-388-9359

Resource Monitoring Tools available at our website: www.countgrass.com

Office (208) 384-1627 Ext. 2 alan@schroederlezamiz.com
FAX (208) 384-1833 E-mail


W. Alan Schroeder
Lawyer

SCHROEDER & LEZAMIZ
LAW OFFICES, LLP
Street Address: 447 West Myrtle
Mailing Address: P.O. Box 267
Boise, Idaho 83701

**Land Improvement Attachment
Specialists for Heavy Equipment**

Steve Smith
Manager, Custom Engineered Products

210/648-8456
San Antonio, Texas
www.holtcat.com

**Your business
card could be
here!**

THE SAMUEL ROBERTS
NOBLE
FOUNDATION

The Agricultural Division of the Samuel Roberts Noble Foundation, Inc., Ardmore, Oklahoma, is seeking a Wildlife and Fisheries Consultant to complement and complete a team of consultants representing several agricultural disciplines. This team provides free technical assistance to farmers, ranchers, and other natural resource managers within a 100-mile radius of Ardmore.

Responsibilities: The primary focus of the person in this position will be to work with a team of consultants from several agricultural disciplines to provide technical assistance to farmers, ranchers, and other natural resource managers. Opportunities exist for research, demonstration, and other educational and developmental projects. This position requires effective one on one communication with clients and the ability to work in a team setting and present information to individuals and groups both verbally and in writing. The successful candidate will be expected to collaborate with the Ag Research Team, Ag Education and Special Projects Manager and other Noble Foundation divisions and departments as well as universities and various agricultural agencies.

Qualifications: Required: Minimum of MS or M.Ag. degree in Wildlife, Fisheries or Range with significant undergraduate or graduate coursework in at least two of the disciplines.

Preferred: Coursework and or experience in Fisheries (especially related to small impoundments), Wildlife and Range. Demonstrated ability to communicate with the general public, farmers and ranchers, and other professionals. A demonstrated knowledge of agriculture and a farm or ranch background.

Salary: Salary commensurate with education and experience.

How to apply: Complete employment application online at www.noble.org, send a letter of application, detailed resume, transcripts and contact information for three references to:

The Samuel Roberts Noble Foundation, Inc.
Human Resources Department
PO Box 2180
Ardmore, OK 73402
Email: nfhr@noble.org
Website: <http://www.noble.org>

Applications will be accepted until a suitable candidate is found. Interested applicants should apply immediately.
EEO/AA/ADA

University of Wyoming—Graduate (MS) Position Available

The Dept. of Veterinary Sciences, University of Wyoming is seeking applicants for a Master's degree program in Toxicology. The primary focus of the funded project will be literature review of water quality issues for livestock and mammalian wildlife, but the training program will include hands-on training in diagnostic toxicology and instrumentation (GC, LC, ICP, MS). Program begins 7/1/08 and stipend includes salary, tuition and health insurance. Laramie, Wyoming is a small (population 29,000) college town in scenic southeastern Wyoming with many opportunities for outdoor recreation. Contact Dr. Merl Raisbeck, raisbeck@uwyo.edu with a statement of your interests and long-term goals, GRE scores and transcripts.

Position Announcement Department Head, Renewable Resources

The Department of Renewable Resources (RNEW) at the University of Wyoming invites applications for the position of department head. We seek applicants with research and teaching expertise in extensive land management related to rangeland ecology, watershed hydrology/water resources, or a closely related discipline. The successful candidate will have a track record of substantive interdisciplinary research and teaching success and familiarity with the role of extension in land-grant universities. Demonstrated administrative skills and fiscal capabilities are required, as the department's annual budget is approximately \$1.9 million; grants and contracts average over \$7.2 million. The primary responsibility of the position is administrative (51%) with expectations for teaching and advising (15%), research (12%), extension (12%), and professional service (10%). The University of Wyoming enjoys a distinctive leadership role as the only public four-year institution of higher learning in Wyoming. The campus is located in Laramie, a city of 25,000 residents, between the Laramie and Medicine Bow Ranges of the Rocky Mountains.

The department is one of the most diverse within the College of Agriculture, consisting of 22 faculty, 5.5 professional and office staff, and 2 academic professionals. RNEW sustains research, extension and teaching in rangeland ecology, watershed management, entomology, and soil science. Detailed program descriptions are available online at <http://www.uwyo.edu/UWrenewable/>. We typically serve more than 120 undergraduate and approximately 40 graduate students in a diverse array of degree majors and minors. RNEW is integral to a variety of campus-wide programs and research initiatives including the Haub School and Ruckelshaus Institute for Environment and Natural Resources, Program in Ecology, Water Resources/Environmental Science and Engineering Program, School of Energy Resources, Wyoming Geographic Information Science Center, EPSCoR, and the Wyoming Restoration and Reclamation Center.

Minimum qualifications:

- Ph.D. in rangeland ecology, watershed management/hydrology or a closely related discipline.
- Documented scholarly achievements at or near the rank of full professor.

Preferred qualifications:

- Demonstrated administrative and fiscal oversight abilities.
- Familiarity with extension and the ability to conduct outreach to constituents of a land-grant university.
- Ability to articulate and advocate the vision and goals of a diverse faculty to a broad range of audiences.

Application Process: Screening of applications will begin on May 1, 2008; the position will remain open until filled.

Required materials to be submitted ELECTRONICALLY only:

1. Curriculum vitae
2. Statement of administrative and leadership philosophy and vision for the Department of Renewable Resources.
3. Names, addresses, phone, and email contacts of at least three references.

Submit required information as email attachments with a subject line "Application, RNEW Head" to: Dr. Stephen D. Miller, Chair; c/o Kathleen Bertoncelj at: kathbert@uwyo.edu.

The University of Wyoming (<http://www.uwyo.edu/>)
is an Equal Access/Equal Opportunity/Affirmative Action Employer.

University of Arizona—Research Specialist Position Available

University of Arizona School of Natural Resources

Salary Range \$31,000 to \$38,000

Available April 1, 2008

Apply only at <http://www.hr.arizona.edu> and select “Apply Here.” Choose “Search Postings”.

Job Title and #: Research Specialist - 40324

The successful candidate will work closely with the Rangeland Management Specialist at the V-V Ranch, a 78,000 acre working/research ranch in the Mogollon Rim country of the Coconino National Forest. The ranch extends from near Camp Verde at ~3000 ft elevation to near Happy Jack at ~7000 ft and encompasses high desert chaparral, piñon-juniper woodland, and pine forest ecosystems. The ranch is a US Forest Service allotment and runs approximately 530 head of beef cattle and 20 horses. The allotment is located between two wilderness areas and has abundant wildlife including elk, deer, eagles and javelina. Primary program areas will include grazing animal ecology and range livestock production, rangeland monitoring on public lands, and livestock/wildlife interactions. This person will be expected to work both within a team setting and independently as needed. The position will consist of both field and office/laboratory responsibilities. The ability to work in remote locations in potentially extreme weather conditions is a necessity. Experience with livestock, including horses is desired, as is the ability to operate an ATV in rugged terrain. Plant identification skills are desired. This person will be responsible for maintaining research records and should be competent in basic word processing and spreadsheet software. This person must be willing to learn the operation of portable near infrared spectroscopy equipment, both in the lab and in the field. B.S. degree in agriculture or rangeland/natural resources is required, an M.S. is preferred. The Camp Verde/Cottonwood/Sedona area is approximately 1.5 hrs north of Phoenix, 1 hr south of Flagstaff and 1 hr east of Prescott. The area has a small town atmosphere with good shopping, educational, medical, cultural and recreational opportunities.

Interested individuals should contact:

Doug Tolleson

Rangeland Management Specialist, V-V Ranch

2657 Village Drive

Cottonwood, AZ 86326

(928) 646-9113 x 18

dougt@cals.arizona.edu

<http://cals.arizona.edu/aes/vbarv>



Certified Professional in Rangeland Management

Congratulations to Matthew Stevenson and Tipton Hudson for successful completion of the CPRM Proficiency Exam during the annual SRM meeting in Louisville, Kentucky. Completion of the exam with a grade of 75% or better is one of the major requirements to qualifying for certification as a professional rangeland manager. Mathew works for University of Hawaii Cooperative Extension Service and is a member of the Cal-Pac Section. Tipton works for Washington State University Extension and is a member of the PNW Section.

CEU Approved Courses

Below is a calendar of functions that have been pre-approved for SRM Continuing Education Units (CEUs)

Date	Location	Title	Credit
Apr 5	Browns Valley, CA	UC Sierra Foothill REC Beef & Range Field Day: Beef Cattle Mgmt http://groups.ucanr.org/sierrafoothill/	5 CEUs
Apr 7-8	Boise, ID	From Pixels to Production: Tools & Techniques for Using Remote Sensing to Understand Rangelands http://www.cnr.uidaho.edu/range/Short_Course/short_course.htm	11 (m-6/t-5)
Apr 8-9	Pennsylvania Furnace, PA	ASI Targeted Grazing Workshop http://www.cnr.uidaho.edu/rx-grazing/	11 (d1-7/d 2-4)
April 17-18	Boise ID	ASI Targeted Grazing Workshop http://www.cnr.uidaho.edu/rx-grazing/	11 (d1-7/d 2-4)
Apr 18	Winters, CA	CNGA Field Day at Hedgerow Farms http://www.cnga.org/action/events.php?event=47	7 CEUs
Apr 22-24	Missoula, MT	Climate Change & Rest. & Protection of Fire Adapted Landscapes & Watersheds	9 (w&th-4/d /f-1) tentative
May 1	Coahoma, TX	Range Education Workshop & Tour - Sterling Cattle Co Ranch Charles.Anderson@tx.usda.gov	6 CEUs
May 1-4	Santa Rosa, CA	CNGA 2008 Annual Conference http://www.cnga.org/action/conference.php	entire conf max 16 CEUs
May 1	Santa Rosa, CA	CNGA 2008 Annual Conference - full day workshops	7 CEUs
May 2	Santa Rosa, CA	CNGA 2008 Annual Conference - tech session	8 CEUs
May 3	Santa Rosa, CA	CNGA 2008 Annual Conference - half day trips	1 each
May 3-4	Santa Rosa, CA	CNGA 2008 Annual Conference - 2 day workshop	9 CEUs
May 4	Santa Rosa, CA	CNGA 2008 Annual Conference extra session	1 CEU
May 16	Blooming Grove, TX	Putting the Grass in "Grass-roots" Restoration Grazing Mgmt Workshop-77 Ranch jeff.goodwin@tx.usda.gov	2 CEUs
Jun 6-7	Watrous, NM	Low-Stress Livestock Handling Clinic http://quiviracoalition.org/Workshops_Events/index.html	13 CEUs (f-7/s-6)
Jun 16-20	Chadron, NE	2008 NE Range Shortcourse http://agronomy.unl.edu/rangeshortcourse/	16 CEUs
Jun 17-19	Bozeman, MT	15th Wildland Shrub Symp – Shrublands: Wildlands & Wildlife Habitats http://eu.montana.edu/shrublands	TBD
Jun 29-Jul 5	Hohhot, China	International IGC-IRC 2008 Congress http://www.igc-irc2008.org/	16 (tentative)
Aug 3-8	Milwaukee, WI	93rd ESA Annual Meeting http://www.esa.org/milwaukee/	CEUs TBD
Sept 10-12	Shepherdstown, WV	TEC7132 - GPS Introduction for Natural Resources Field Personnel http://training.fws.gov/branchsites/CLM/Courses/tec7132.html	16 CEUs
Oct 20-22	Oklahoma City, OK	Farming with Grass http://www.swcs.org/index.cfm?nodeID=12758	16 (m-3/t-8/w-5)

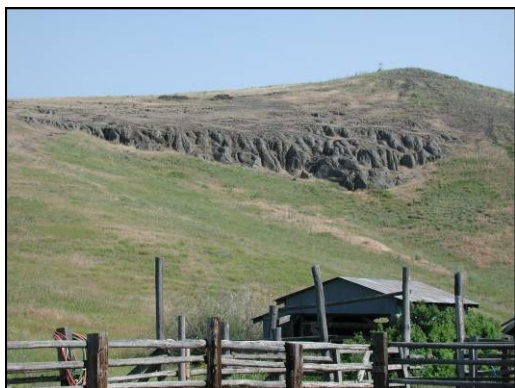
If you know of a function that you want to attend but do not see it here, please send the information to:
SRM, ATTN: Vicky Trujillo, 10030 W 27th Ave, Wheat Ridge, CO 80215-6601;
vtrujillo@rangelands.org, Fax 303-986-3892

Society for Range Management

10030 West 27th Avenue
Wheat Ridge, CO 80215

Phone: 303-986-3309
Fax: 303-986-3892
E-mail: info@rangelands.org

We're on the Web



Our VISION: a well-trained and highly motivated group of professionals and rangeland users working with productive, sustainable rangeland ecosystems.

Our MISSION: to promote the professional development and continuing education of members and the public and the stewardship of rangeland resources.

Upcoming Meetings

April 24, 2008	<u>FL Section Summer Meeting Tour</u>
May 12-13, 2008	Annual Meeting of the American Institute of Biological Sciences
June 6-7, 2008	<u>NV Section Summer Meeting & Tour UNR Gund Ranch</u>
June 11-12, 2008	<u>PNW Section Summer Meeting</u>
June 24-26, 2008	International Mountain Section Summer Meeting
June 29-July 5, 2008	<u>International IGC-IRC 2008 Congress</u>
June 27, 2008	<u>Texas Hillington Ranch Tour</u>
August 26-29, 2008	Mexico Section Meeting
Sept. 4-5, 2008	Climate Change Workshop (ARS, SRM and others)
October 6-8, 2008	SD & NE Section Annual Mtg, Joint with SDGC & NEGLC: Alternatives for Sustainable Grasslands
October 8-10, 2008	<u>TX Section Annual Meeting</u>
February 8-12, 2009	<u>62nd Annual Meeting of the SRM</u>
February 7-11, 2010	63rd Annual Meeting of the SRM

Sarasota County, FL
Arlington, VA
Austin NV
Okanogan, WA
TBD
Hohhot, China
Comfort, TX
Saltillo, Coahuila
Cheyenne, WY
Valentine, NE

Nacogdoches, TX
Albuquerque, NM
Denver, CO



Call for Symposia and Special Session Proposals

62nd Annual Meeting

The goal of symposia, workshops, and forums are to provide information in formats not appropriate to the Concurrent Sessions normally used at SRM Annual Meetings.

Go to: <http://www.srmmeetings.org/symposia.php>