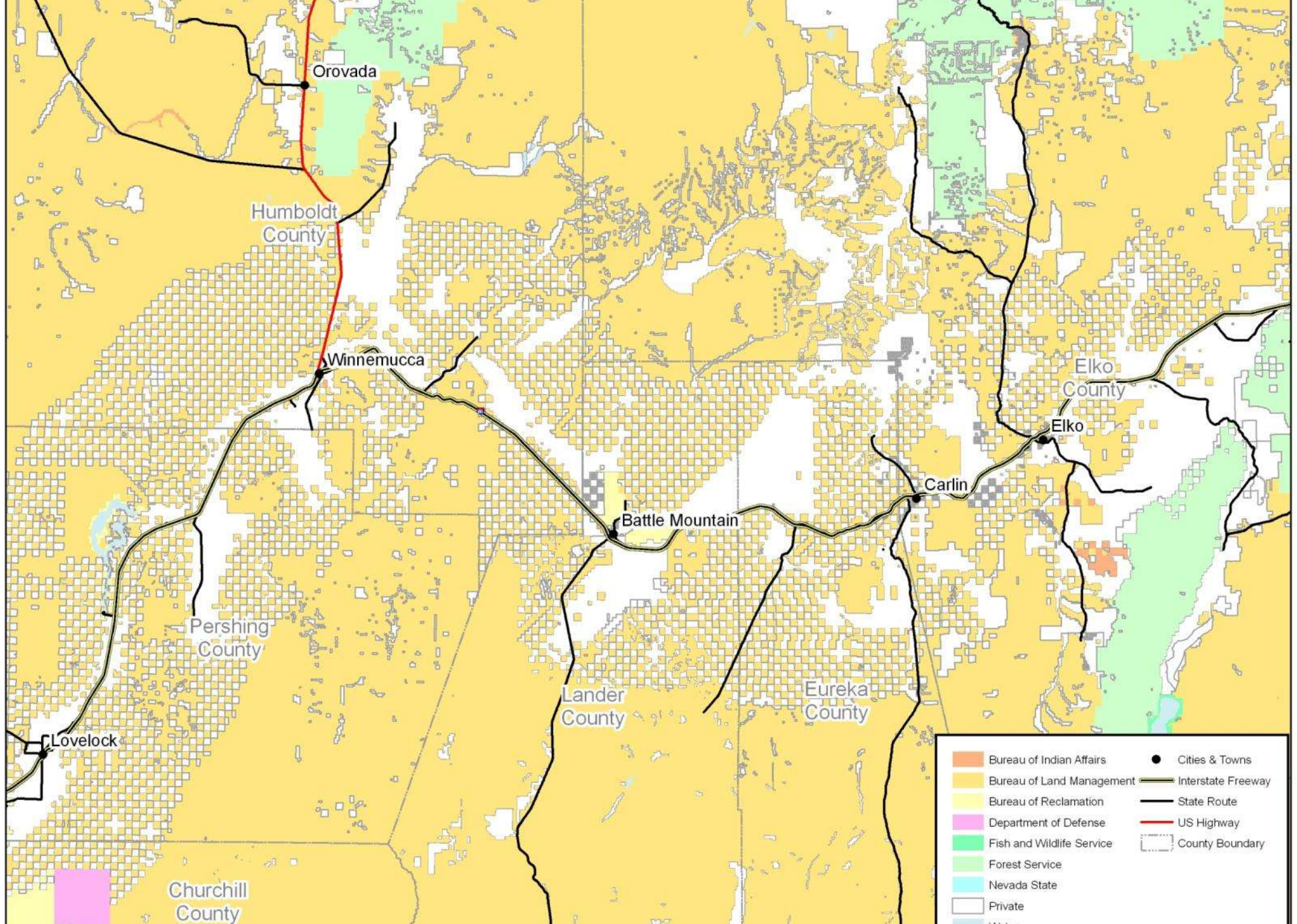




Wildfire and Invasive Plants in American Deserts

C. Stephen Allred
U.S. Department of the Interior
Assistant Secretary for
Land and Minerals Management

Reno, Nevada
December 9, 2008



Orovada

Humboldt
County

Winnemucca

Elko
County

Elko

Carlin

Battle Mountain

Pershing
County

Lander
County

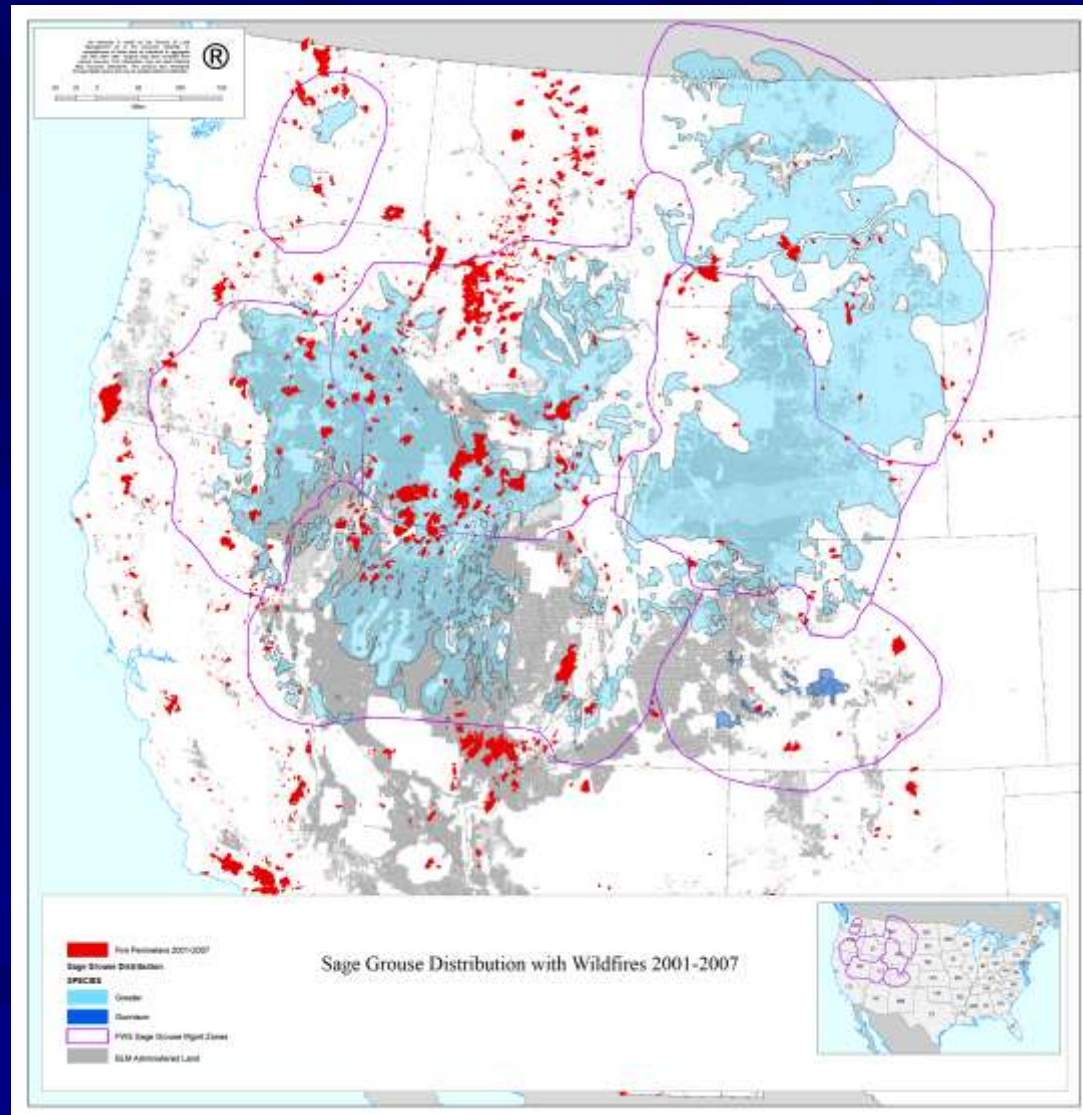
Eureka
County

Lovelock

Churchill
County

- | | |
|---|--|
| Bureau of Indian Affairs | Cities & Towns |
| Bureau of Land Management | Interstate Freeway |
| Bureau of Reclamation | State Route |
| Department of Defense | US Highway |
| Fish and Wildlife Service | County Boundary |
| Forest Service | |
| Nevada State | |
| Private | |

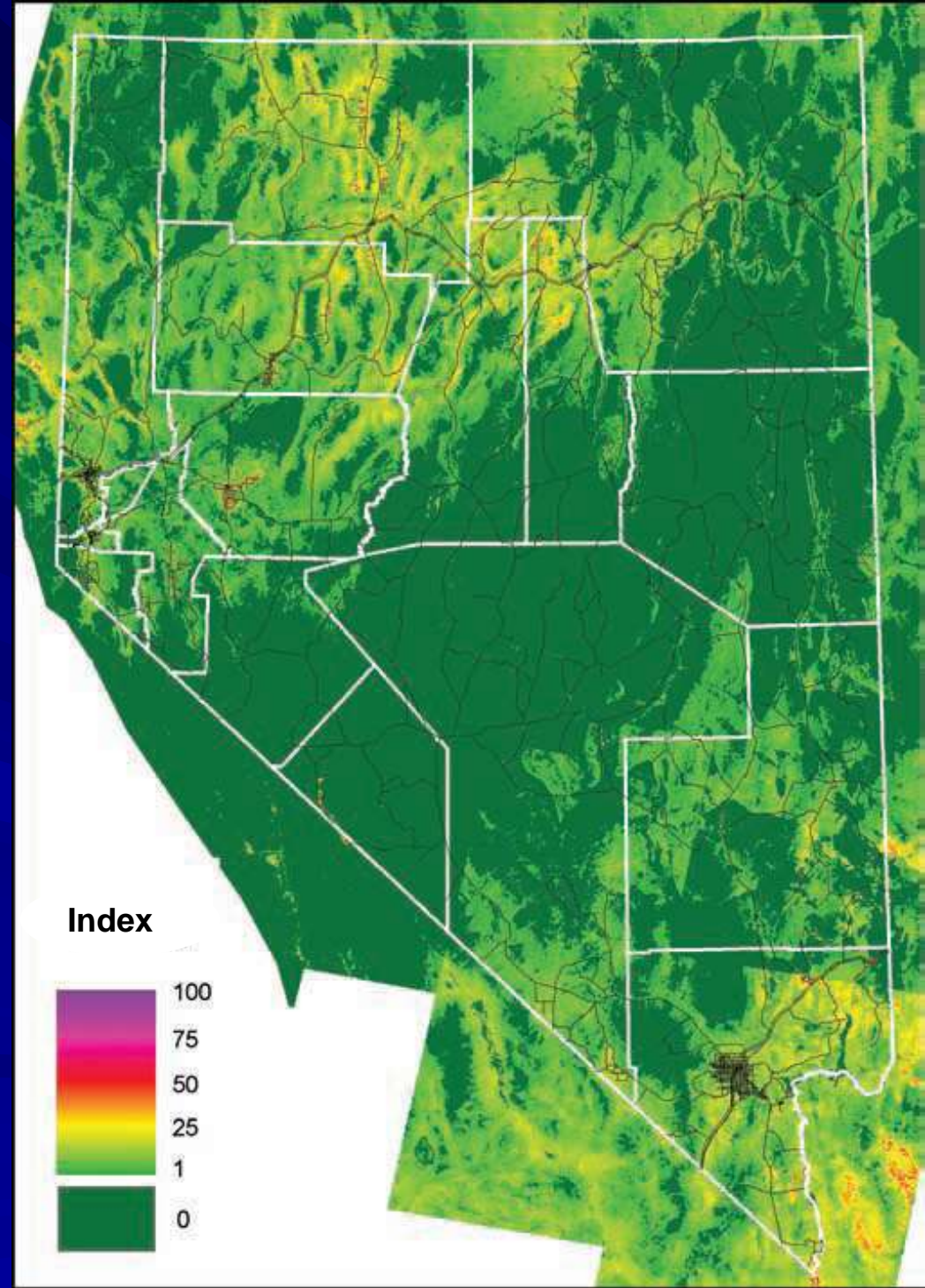
Fire and Sage Grouse Habitat



Wildland Fire 2001 - 2007

Annual Grass Distribution in Nevada

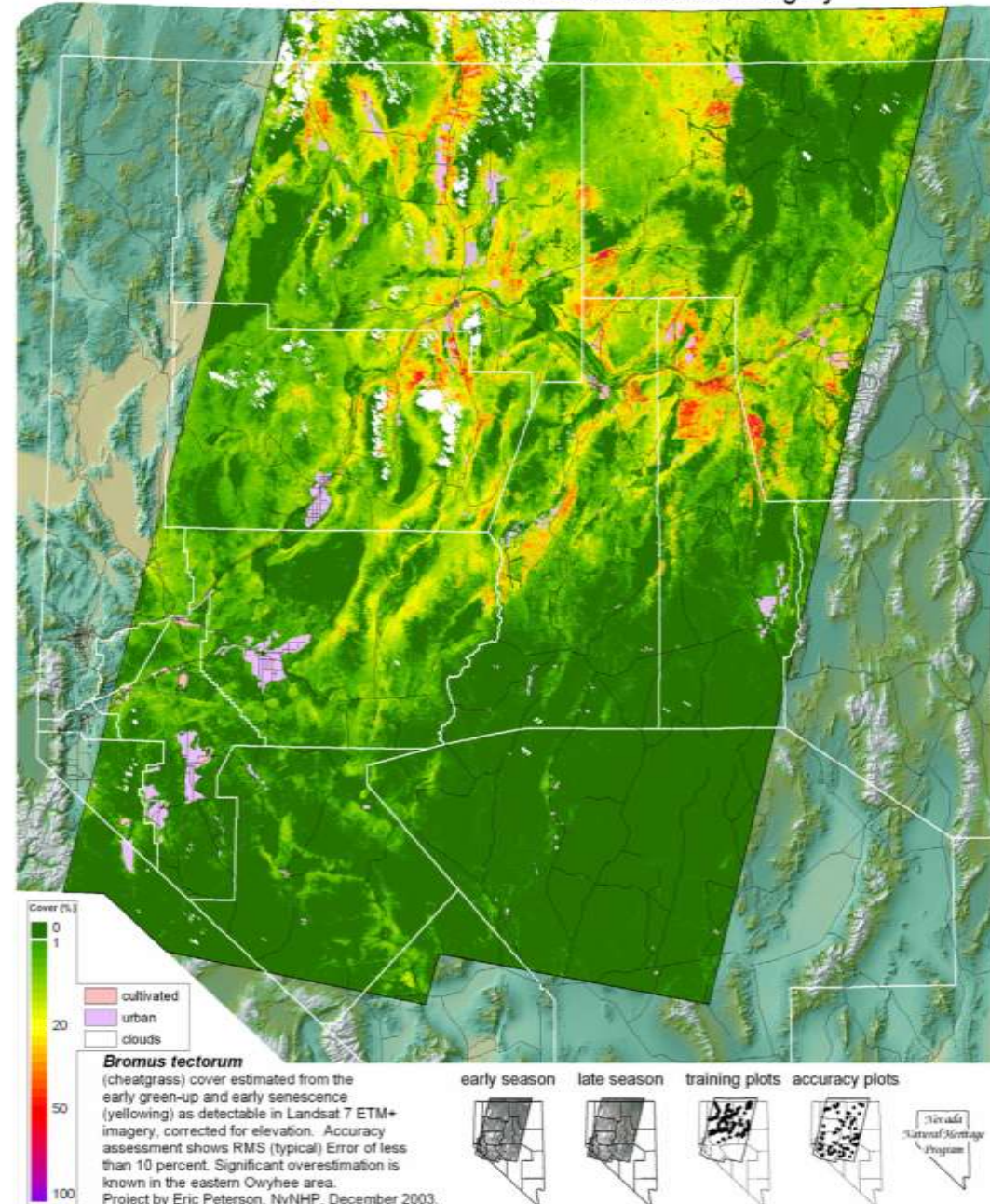
- 41% (29 million ac.)
partially infested
- 11% (7.8 million ac.)
heavily infested



Nevada Natural Heritage Program 2001 Estimate

- 11.2 million acres contain minimum 10% cover in cheatgrass
- 3.5 million acres (31%) of which is private land

Cheatgrass - Estimated Percent Cover from 2001 Satellite Imagery

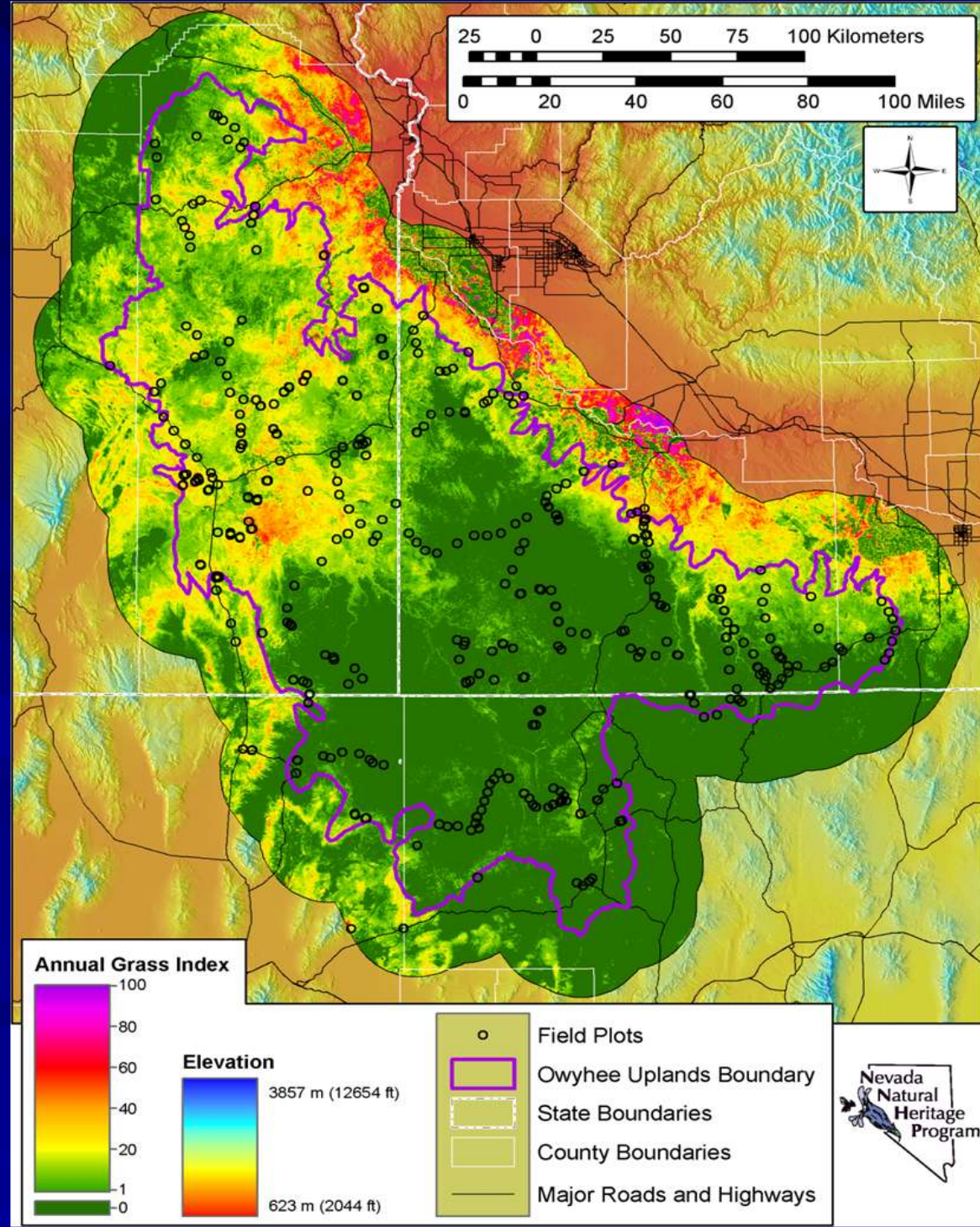




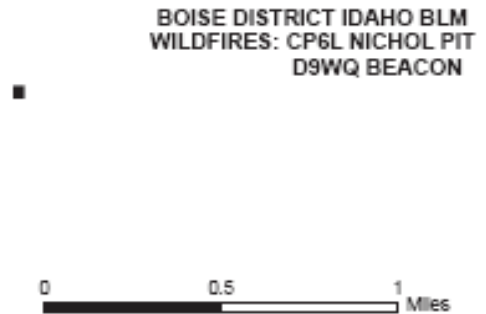
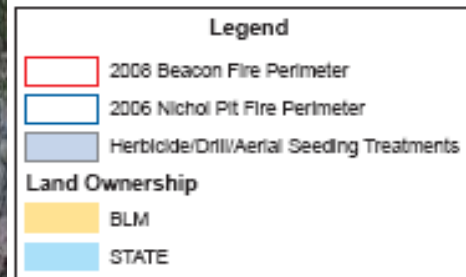
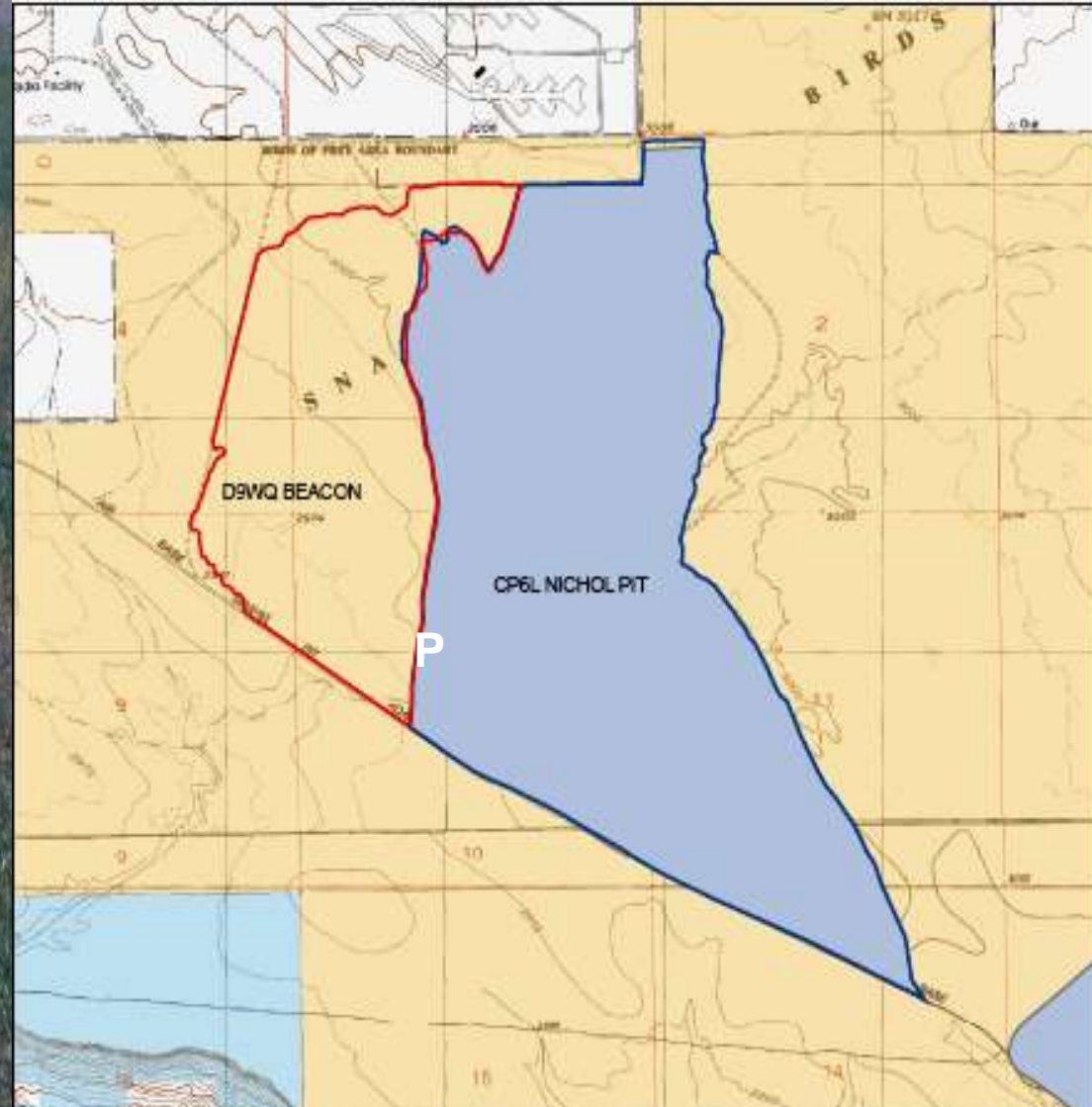
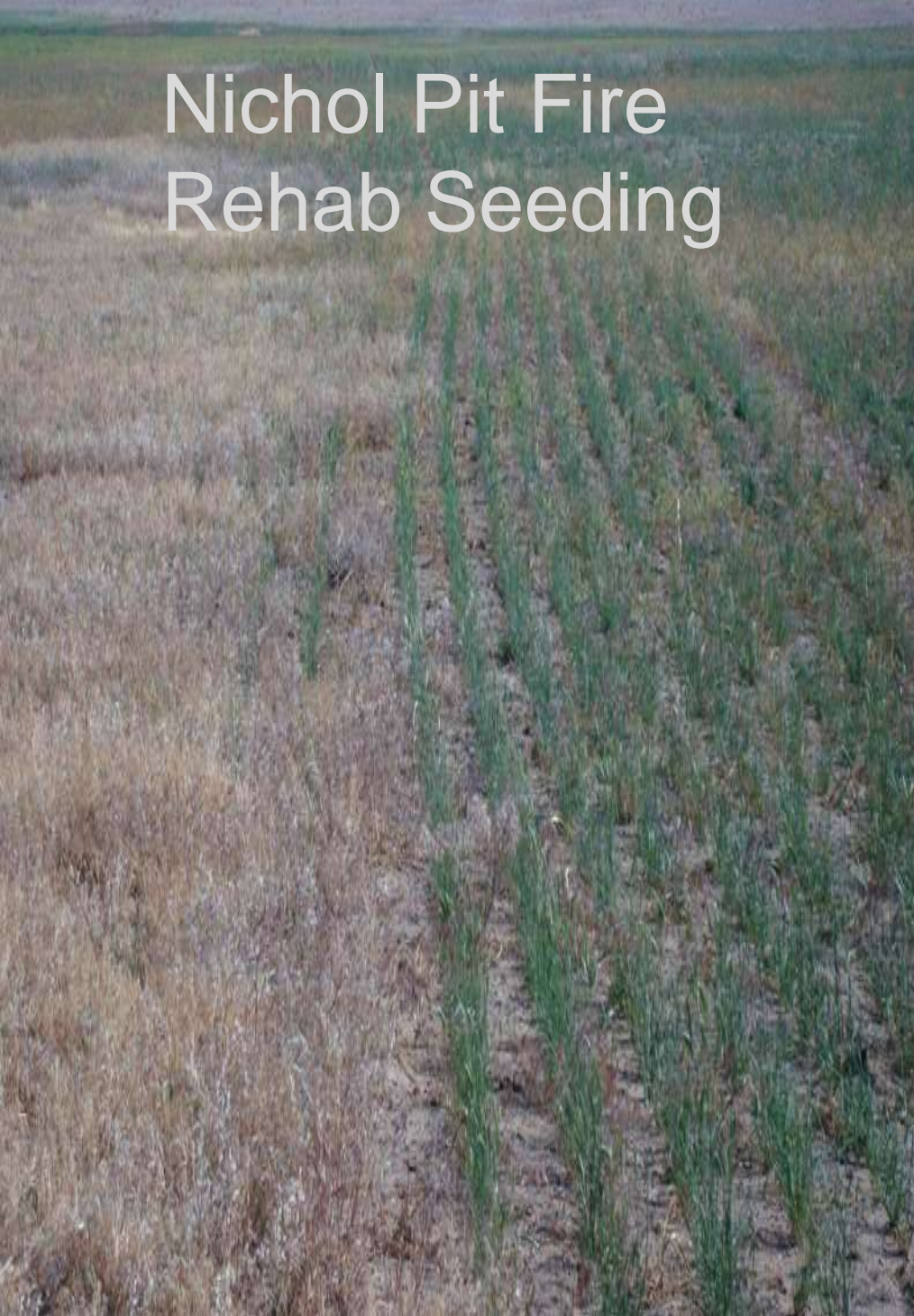


Threats to Sagebrush Integrity in the Owyhee Uplands -- Cheatgrass

(Note large block of un-infested lands.)



Nichol Pit Fire Rehab Seeding





Wildfire and Invasive Plants in American Deserts

C. Stephen Allred
U.S. Department of the Interior
Assistant Secretary for
Land and Minerals Management

Reno, Nevada
December 9, 2008