



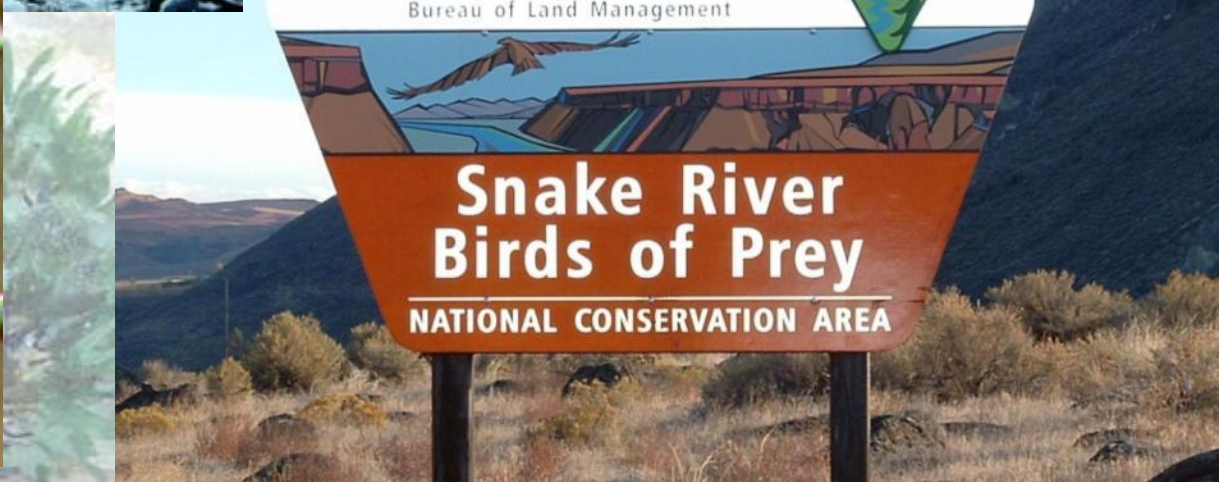
Snake River Birds of Prey

NATIONAL CONSERVATION AREA

John Sullivan
BLM Boise District
Boise, Idaho

Snake River Birds of Prey

NATIONAL CONSERVATION AREA



Snake River Birds of Prey

NATIONAL CONSERVATION AREA



Established in 1993



Snake River Birds of Prey

NATIONAL CONSERVATION AREA



- **Densest Concentration of Nesting Raptors in North America**



Snake River Birds of Prey

NATIONAL CONSERVATION AREA



- 700+ Nesting Pairs
- 15 Nesting Species
- 9 Migrating Species

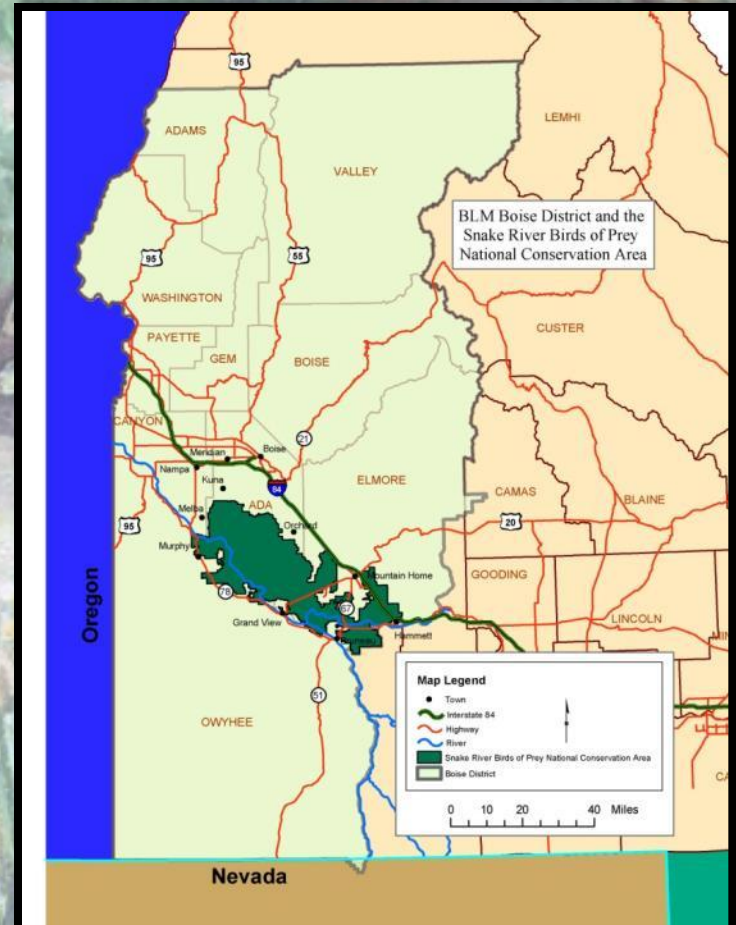
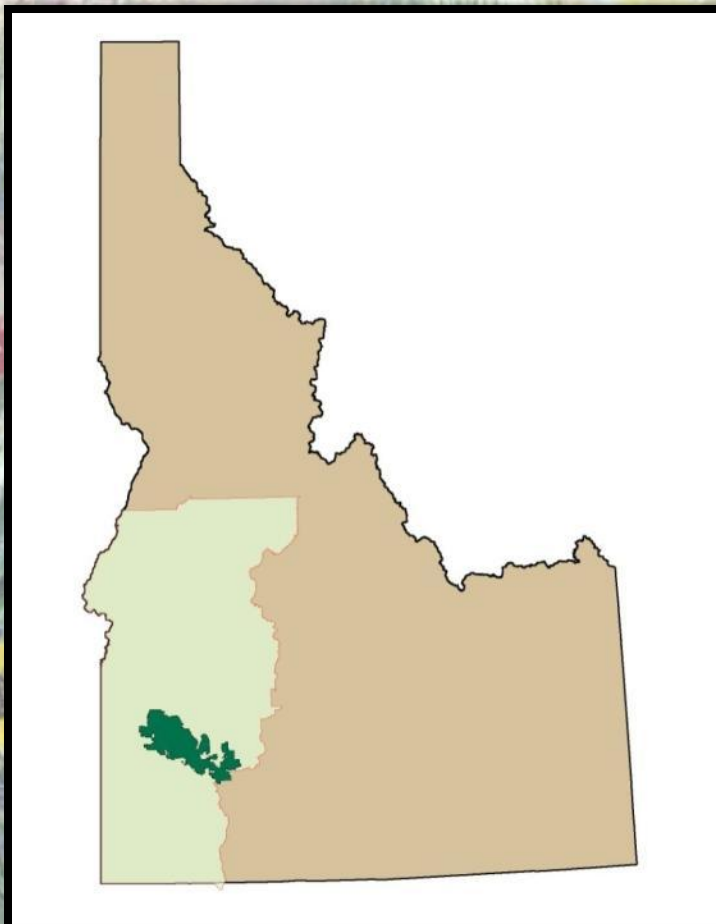


Snake River Birds of Prey

NATIONAL CONSERVATION AREA



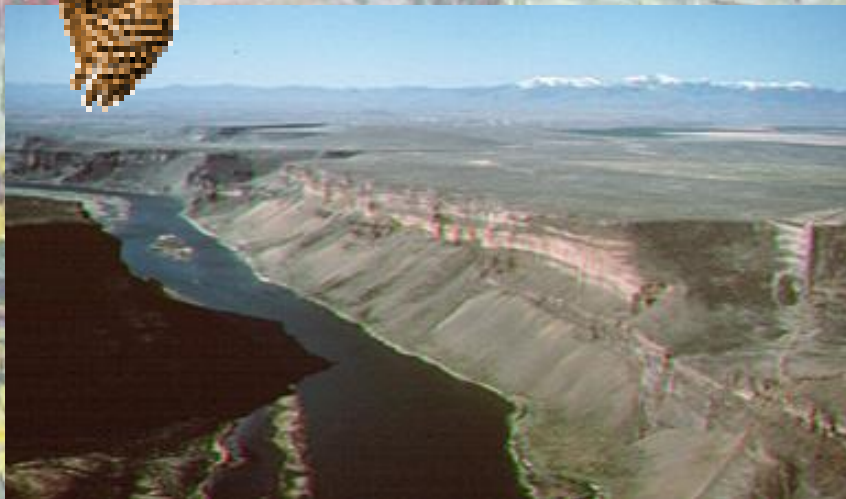
Within a 30-minute drive of Boise and about half of Idaho's population



Snake River Birds of Prey NATIONAL CONSERVATION AREA



- Canyon Nesting Habitat
- Upland Shrub Foraging Habitat



Snake River Birds of Prey

NATIONAL CONSERVATION AREA



Livestock Grazing



Snake River Birds of Prey

NATIONAL CONSERVATION AREA



Power Production



Snake River Birds of Prey

NATIONAL CONSERVATION AREA



Cultural & Historic Resources



Snake River Birds of Prey

NATIONAL CONSERVATION AREA



National Guard Military Training



Snake River Birds of Prey

NATIONAL CONSERVATION AREA



Recreation



Snake River Birds of Prey

NATIONAL CONSERVATION AREA



Bird Watching



Snake River Birds of Prey

NATIONAL CONSERVATION AREA



Recreation Conflicts



Snake River Birds of Prey

NATIONAL CONSERVATION AREA



Education



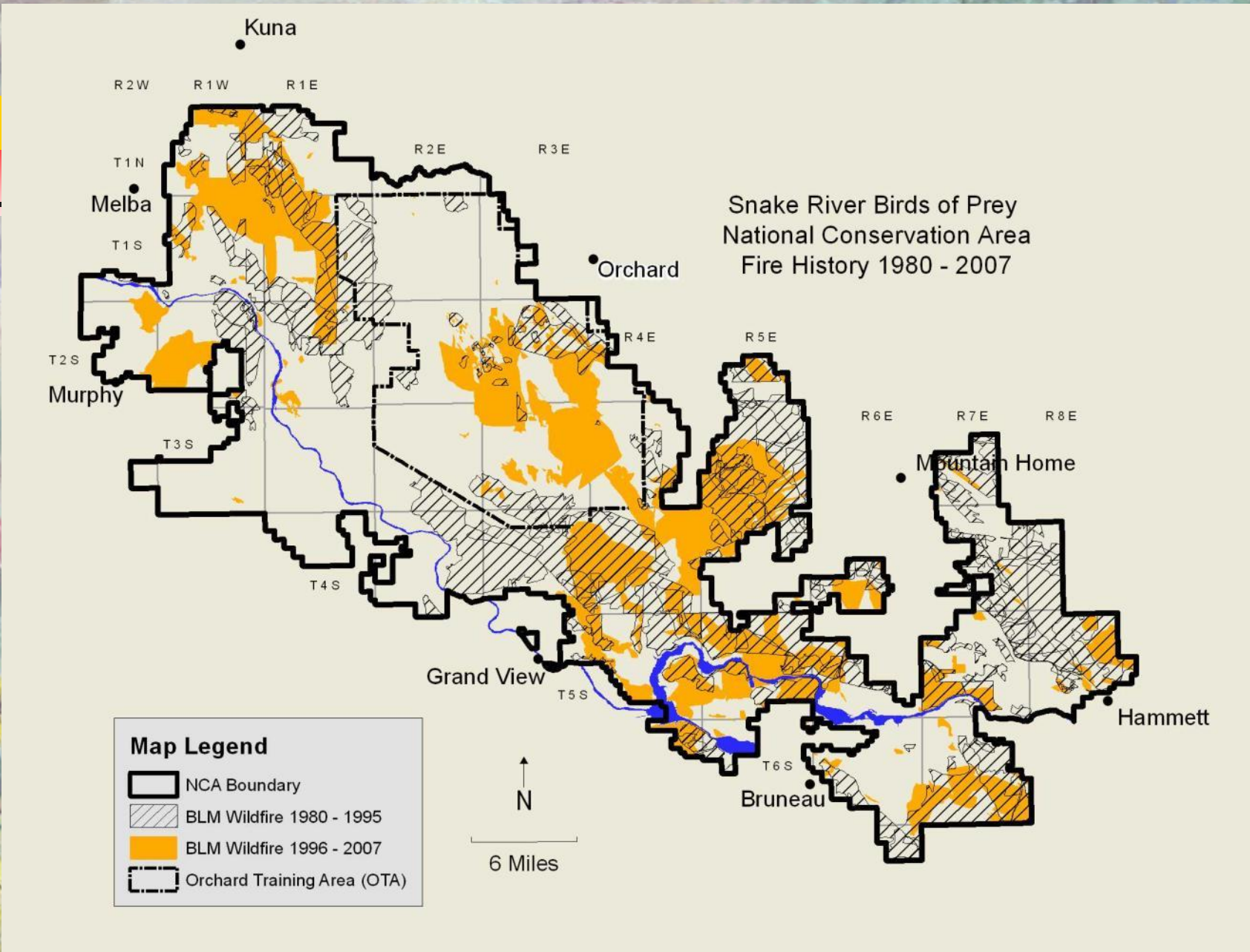
Snake River Birds of Prey

NATIONAL CONSERVATION AREA



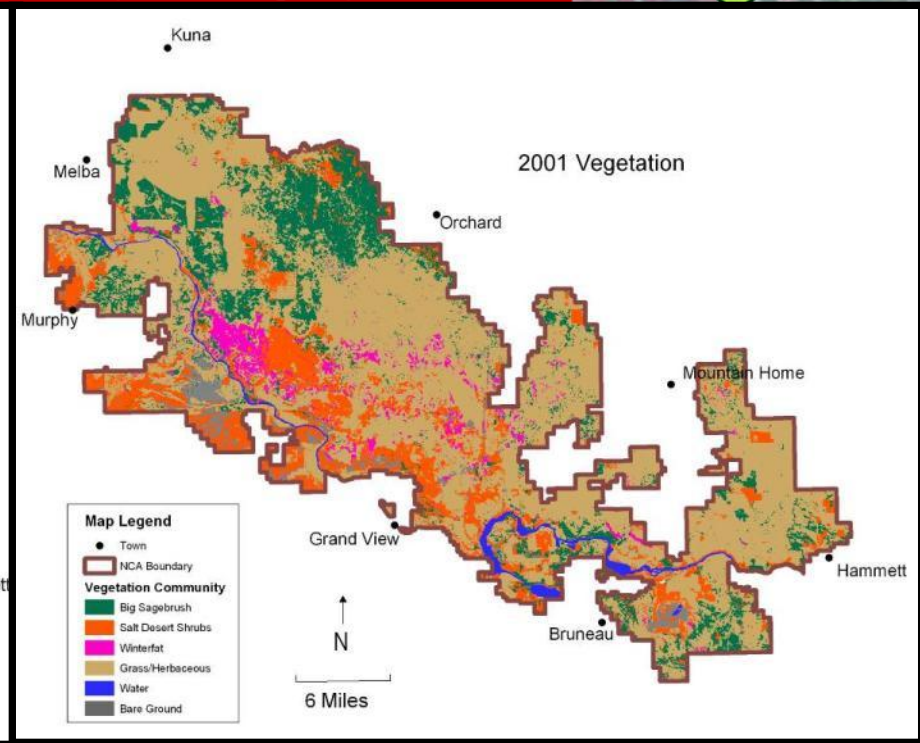
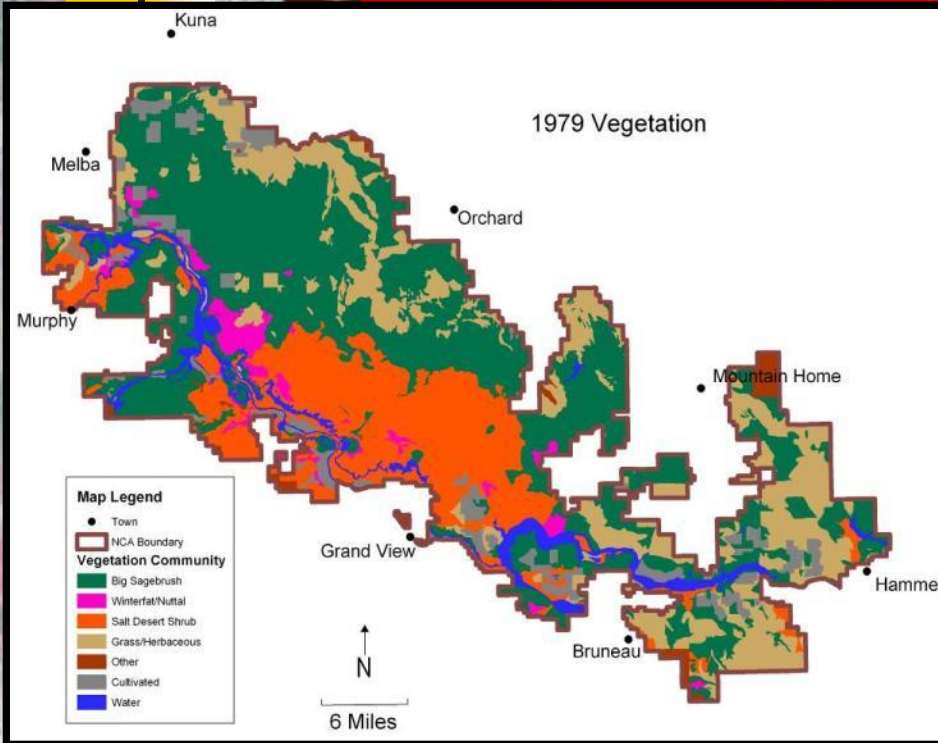
Wildfires





Snake River Birds of Prey

NATIONAL CONSERVATION AREA

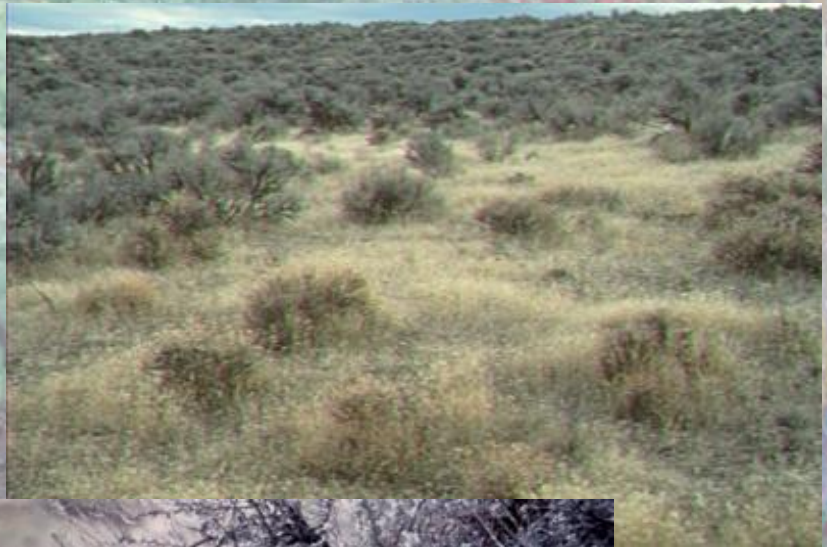


Snake River Birds of Prey

NATIONAL CONSERVATION AREA



Shrub Loss / Jackrabbit Loss



Snake River Birds of Prey

NATIONAL CONSERVATION AREA



Loss of Prey Habitat

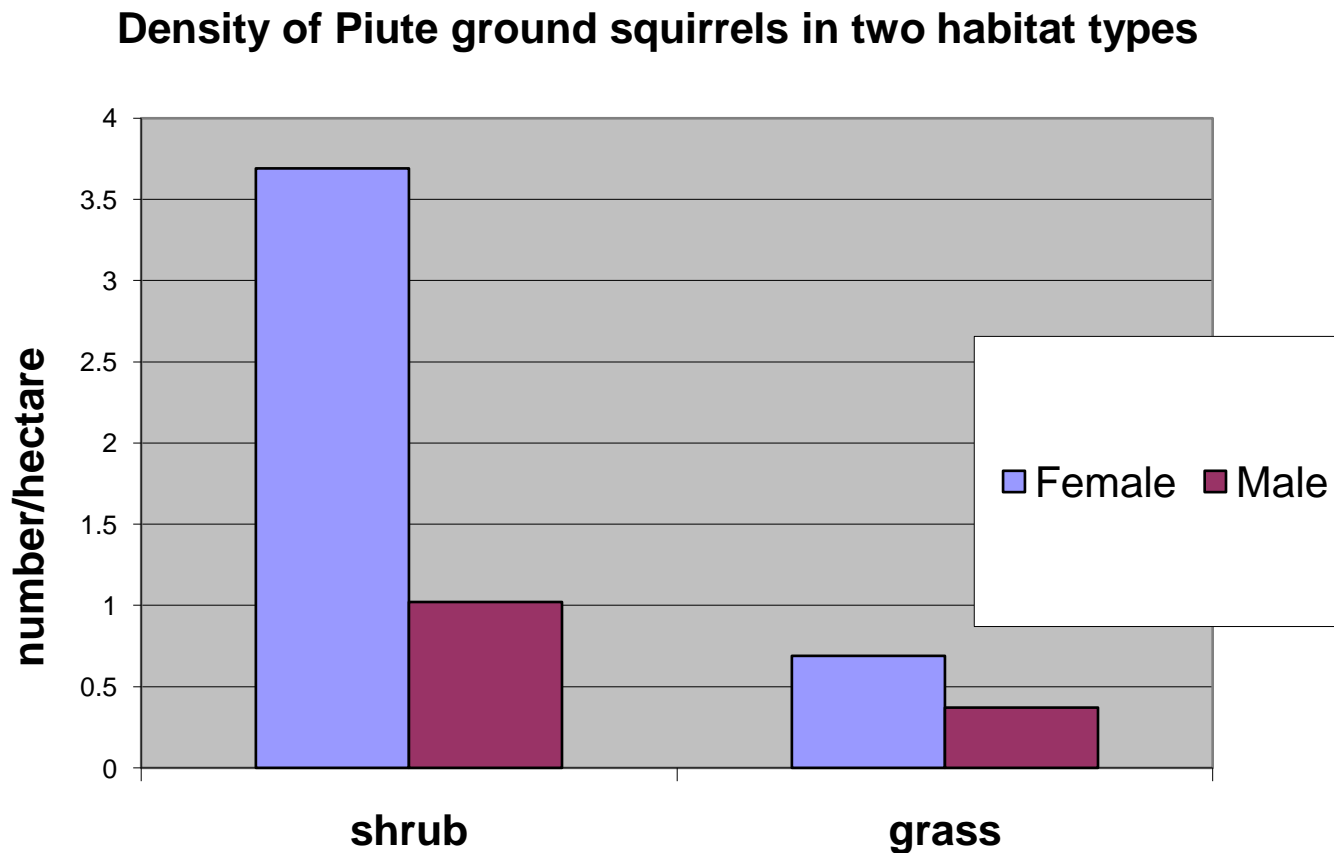


Snake River Birds of Prey

NATIONAL CONSERVATION AREA



Prey Population Declines



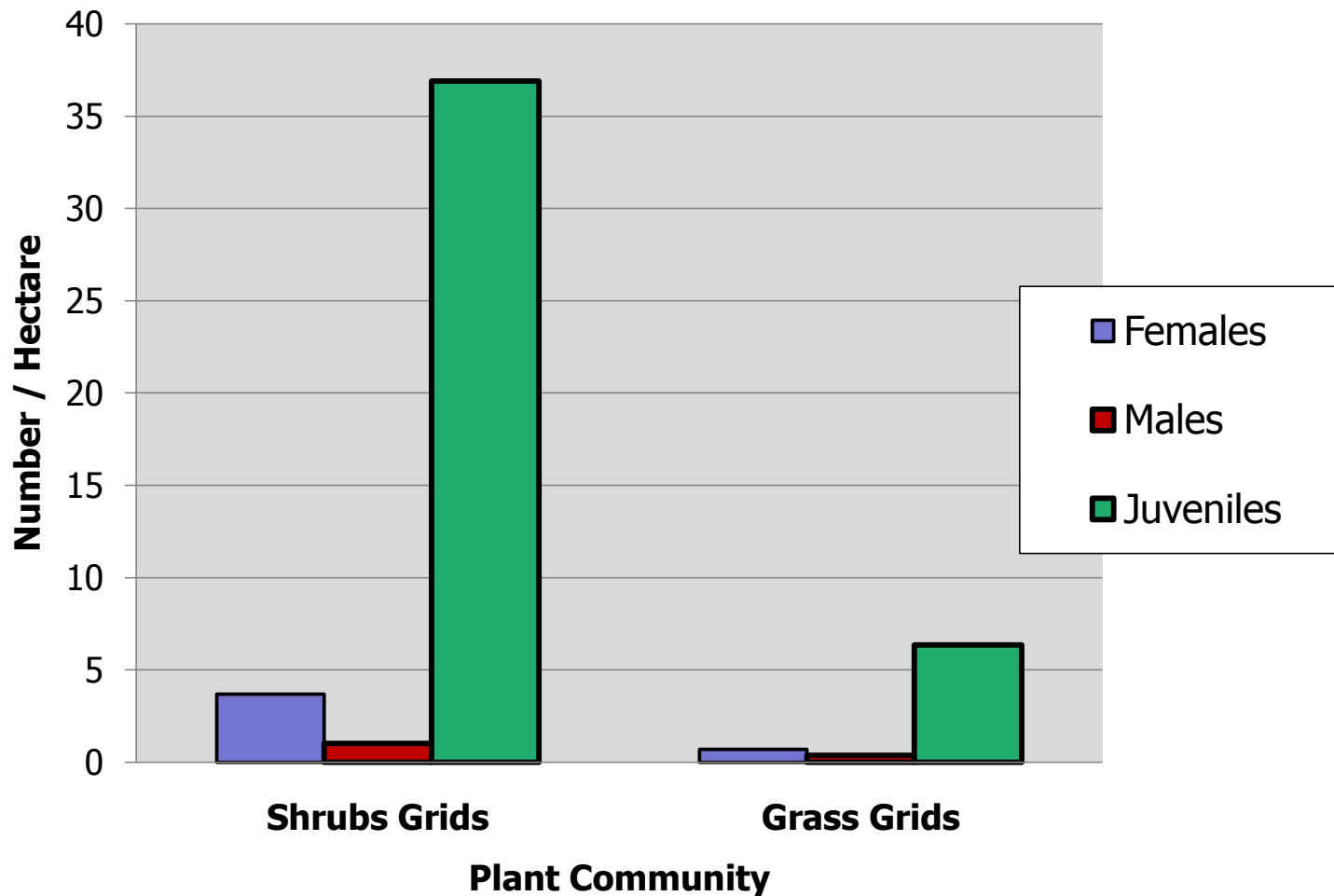
Snake River Birds of Prey

NATIONAL CONSERVATION AREA



Prey Population Declines

Piute Ground Squirrel Density



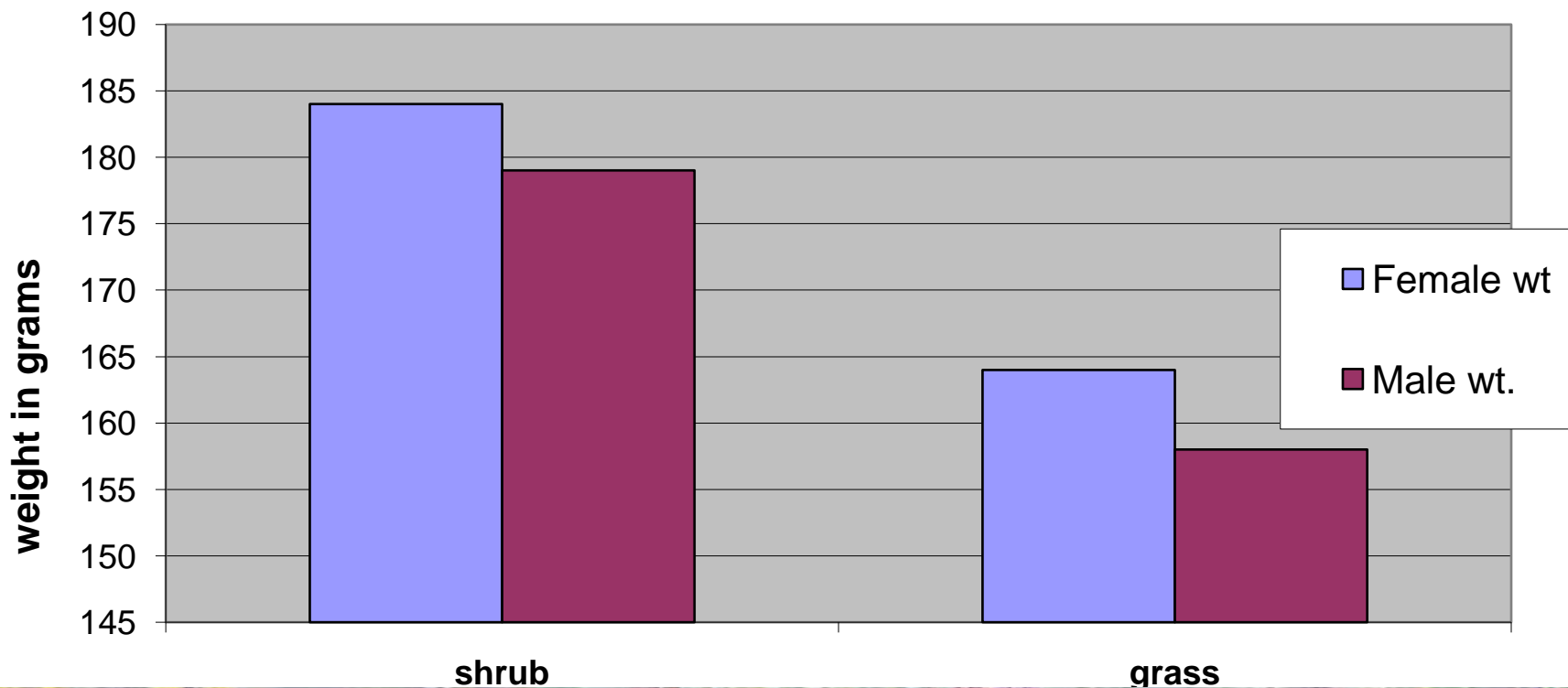
Snake River Birds of Prey

NATIONAL CONSERVATION AREA



Prey Population Declines

Average weight of Piute ground squirrels in shrub and grass habitats

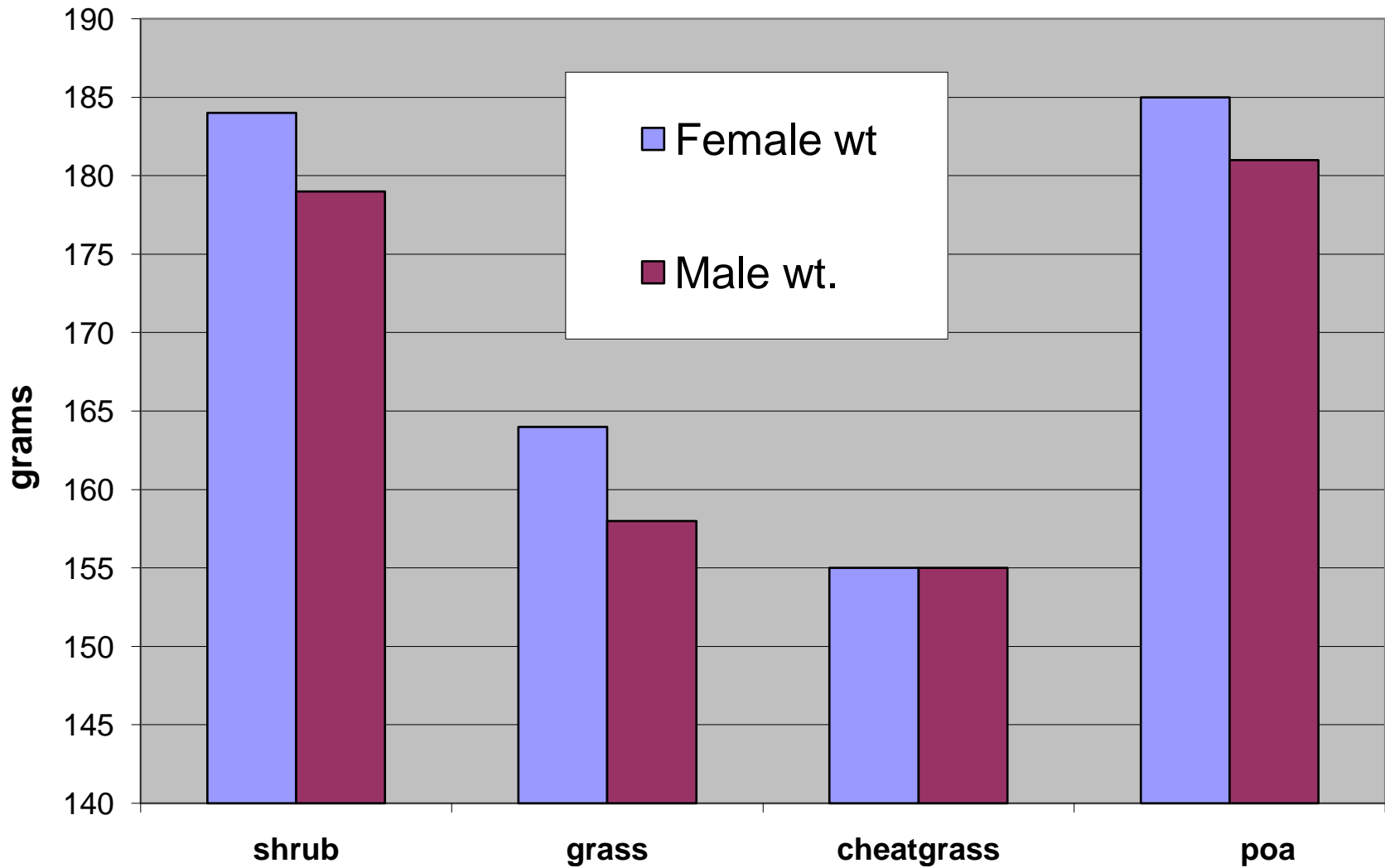


Snake River Birds of Prey

NATIONAL CONSERVATION AREA



Average weight of Piute ground squirrels in different habitats



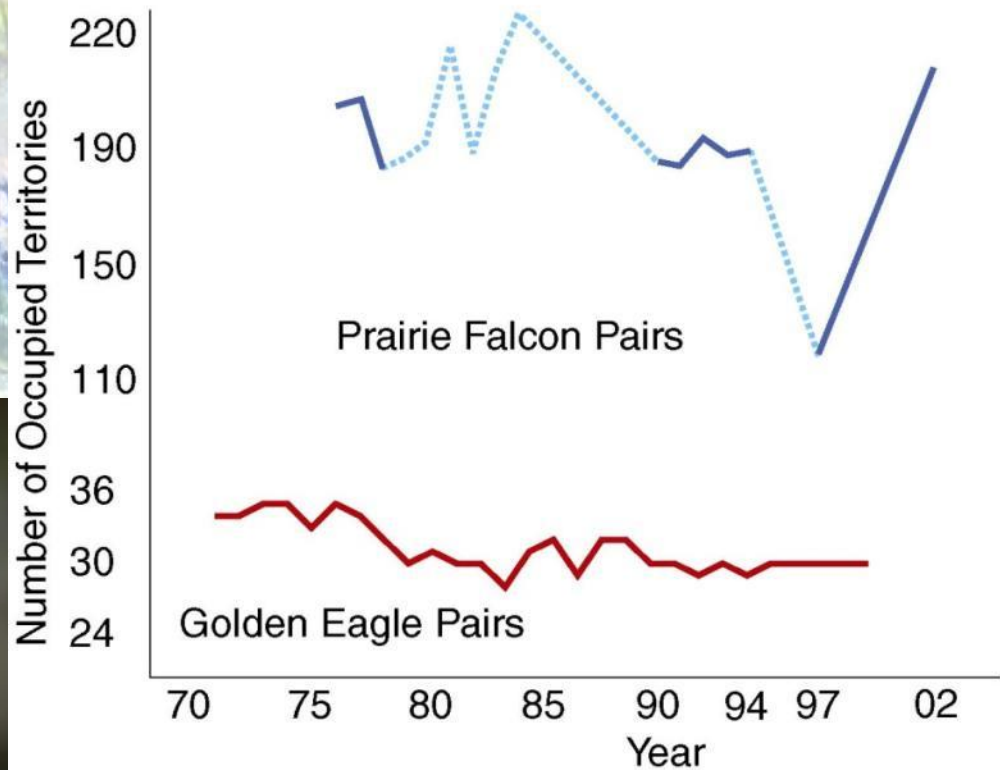
Snake River Birds of Prey

NATIONAL CONSERVATION AREA



Raptor Population Declines

Golden Eagle and Prairie Falcon pairs in the NCA



Snake River Birds of Prey

NATIONAL CONSERVATION AREA



Seeking Solutions

- Research
- Symposium
- Workshop

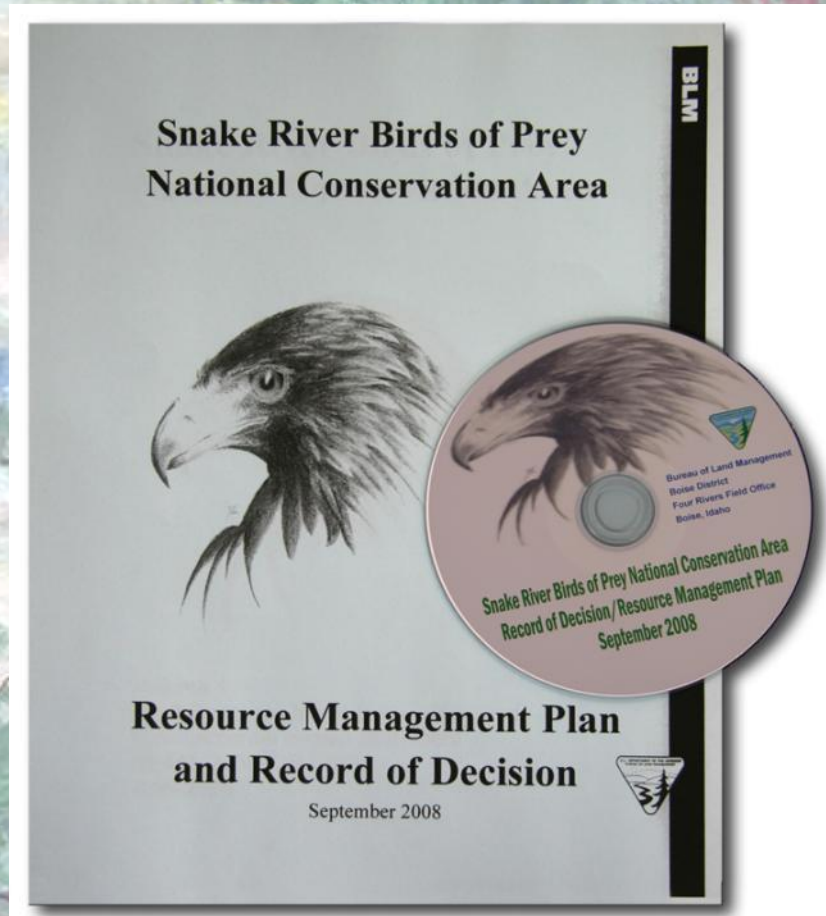


Snake River Birds of Prey NATIONAL CONSERVATION AREA



Resource Management Plan

**ROD signed on
September 30, 2008**



Snake River Birds of Prey

NATIONAL CONSERVATION AREA



Resource Management Plan Decisions

- Aggressive wildfire suppression
- Habitat restoration - 130,000 acres
- Fuels reduction - 100,000 acres
- Off-road vehicle use eliminated
- Restrictions on military training
- Land ownership consolidation
- Special status species management
- NCA boundary adjustment
- Research set-aside – 5000 acres



