

Fuels Management on a Landscape Scale

Overcoming Roadblocks to Implementation


Jesse Juen, Associate State Director
BLM New Mexico

Restore New Mexico

- An aggressive partnership to restore woodlands, grasslands and riparian areas to a healthy and productive condition
- 860,000+ Acres Treated since 2005
- Five million additional acres identified for future treatments



Restore New Mexico

- 
- A landscape photograph showing a green, grassy field in the foreground with several small, dark shrubs. In the background, there are rolling hills covered in dense green vegetation under a clear sky.
- Curtail the expansion of invasive plant species (mesquite, creosote, juniper, & salt cedar)
 - Improve water quality & quantity
 - Reduce impacts from catastrophic wildfire
 - Restore habitat for fish, wildlife, and endangered species
 - Defragment habitat from historic oil and gas development

Making It Happen

Five Steps to Success...

- Assess with partners
- Plan with partners
- Treat the land with partners
- Monitor with partners
- Adjust with partners



Oh yeah...did I mention
the importance of
partners?

Making It Happen

- 
- Rangeland Health Assessments used to determine and prioritize treatments
 - Our goal is to meet or exceed standards
 - Leads to a toolbox of techniques and strategies to treat/restore impacted areas while maintaining healthy lands

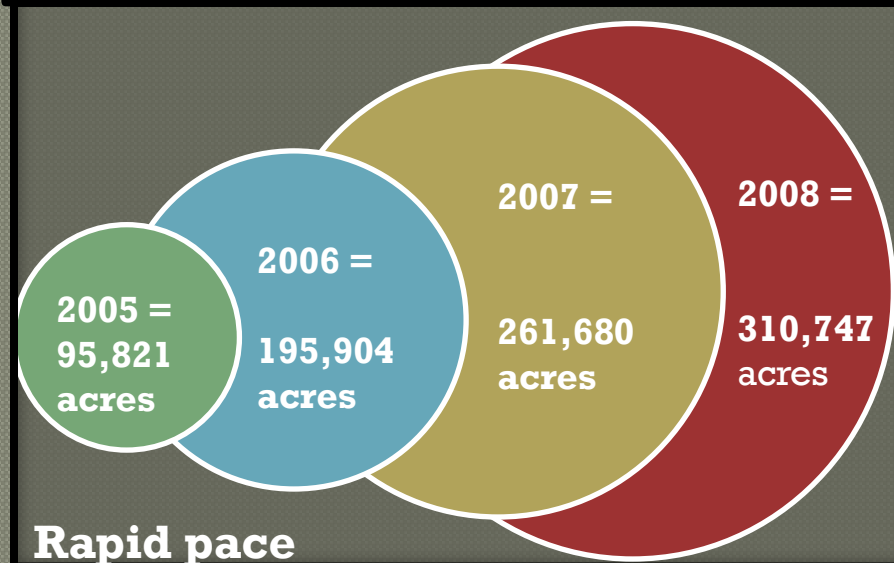
Making It Happen

- ◎ End outcome takes time to occur
- ◎ Let results speak for themselves

Sept 07 → Oct 07 → Aug 08



New Mexico's Toolbox



Management Support

NM State Director's priority +

Field Specialists desire to improve
land health =

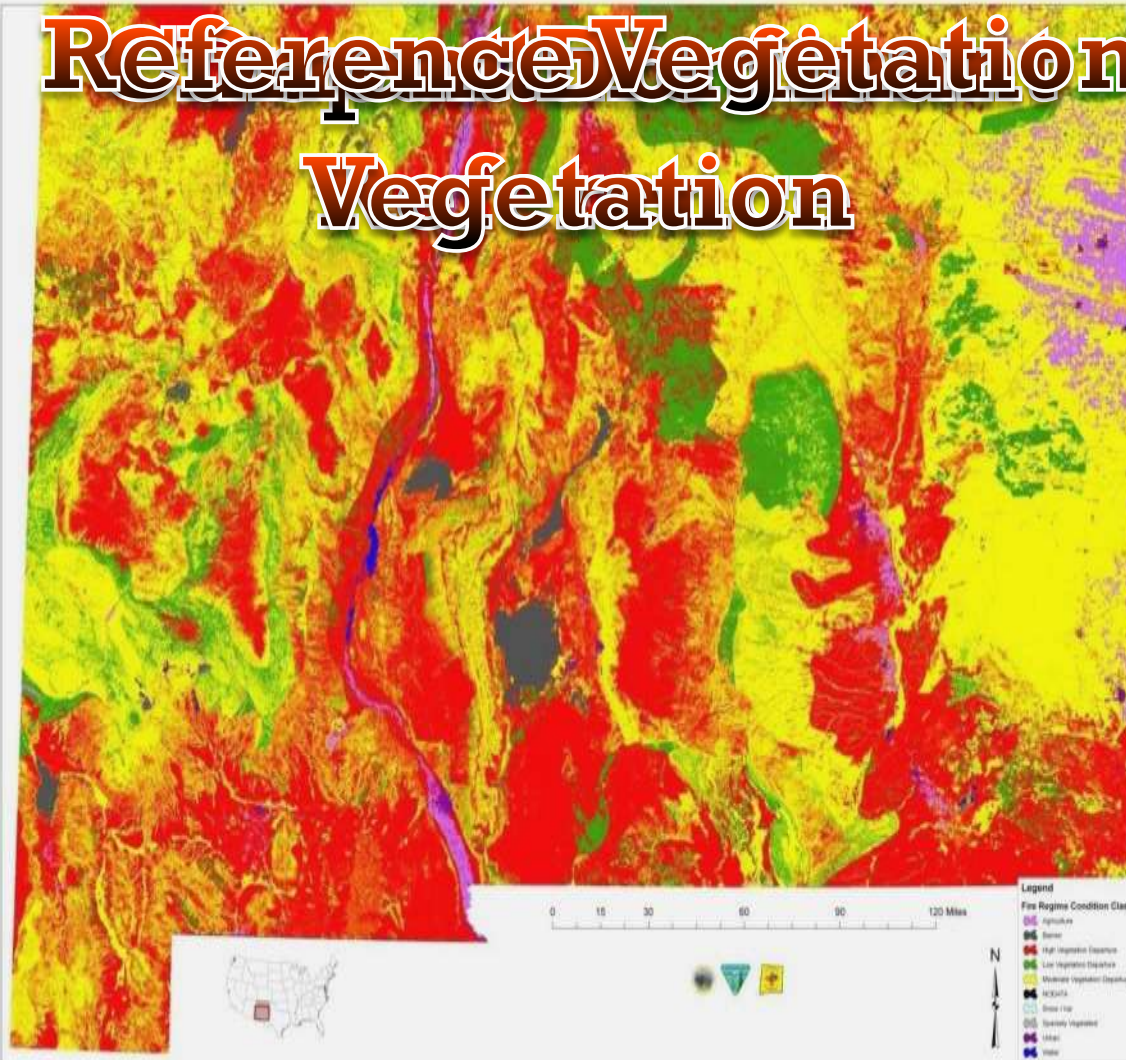
An Unprecedented Opportunity

Scale:

- ◎ Think BIG then think BIGGER
- ◎ Identify obstacles then work on alternatives to get 'er done
- ◎ Generate enthusiasm and create innovation
- ◎ Use technology

Landfire - Southern New Mexico

Reference Vegetation Vegetation

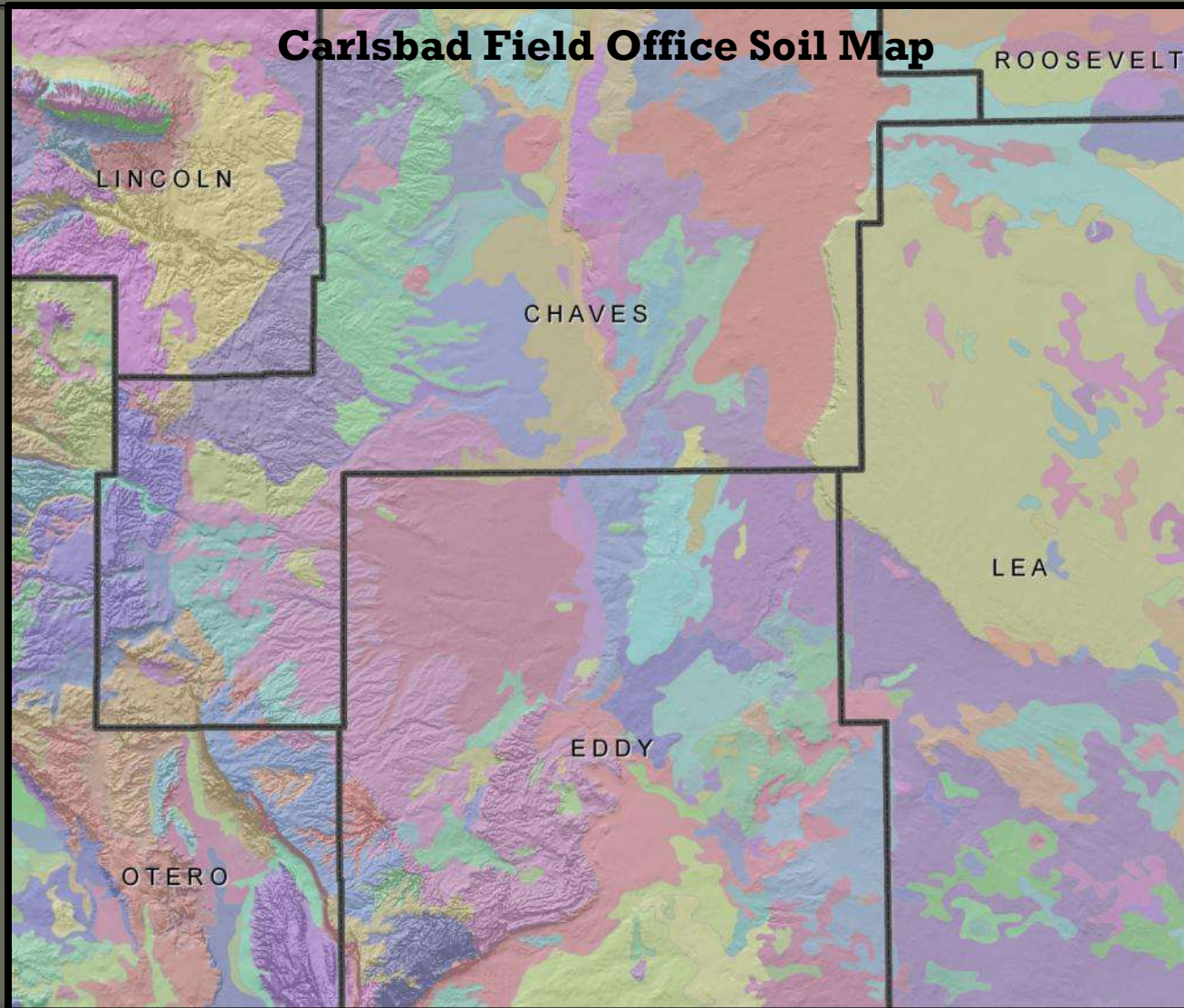


High
Vegetative
Departure

Moderate
Vegetative
Departure

Low
Vegetative
Departure

Localizing Priority Projects



Larger SCALE...

- ◎ Assessment
- ◎ Economy of scale
- ◎ Be ready
- ◎ Share expertise



- ⦿ Demands on the land increasing
- ⦿ Weeds, invasives and other impacts to the landscape are spreading
- ⦿ Land Health must outpace demands and impacts



Accelerating the PACE...

- ◎ GIS/databases for mapping, tracking and planning
- ◎ Don't duplicate monitoring efforts
- ◎ Landscape/watershed EA's
- ◎ Integrated pest management model – use all the tools you've got
- ◎ Streamline implementation procedures



Partnerships

- Engage partners of all types
- Develop strategies together



- Leverage all resources
- Joint commitment

Increasing Partnerships

Work hard to establish trust
Be opportunistic, “Let Mikey try it”
Reward success



Our Initial Roadblocks

- ◎ Program stovepiping and budget planning cycles
- ◎ “Ownership” of accomplishments
- ◎ Workload Issues
- ◎ Addressing Critics

Our Solutions

Program stovepiping and budget planning cycles

- 
- Focused first on our most highly motivated offices to demonstrate success
 - Convened interdisciplinary teams/meetings for project planning
 - Planned appropriate scale with right players
 - Engaged national program leads

Our Solutions

“Ownership” of Accomplishments

- Let everyone claim success
- Let others tell our story
- Show ‘em what your doing



Our Solutions

Workload Issues

Efficiencies gained by use of:

Technology

Volunteers including BLM retirees

Employee-partnership creativity

Scale (individual vs. collective projects)



**200 years collective BLM
experience!**

Our Solutions

Addressing Critics

- ◎ Start small and grow
 - ◎ Actions speak louder than words
 - ◎ Provide field visits for potential partners and critics
 - ◎ Listen to your critics even if they're not listening to you
- 

Recommendations

- Point person with passion
- Integrated focus of all programs to meet the goals
- Geospatial technology
- Flexibility to shift funds to achieve biggest bang-for-the-buck
- Landscape-level EA's

Recommendations

- Risk models to help make decisions (such as Rangeland Ecological Assessments)
- Agreements that promote multi-jurisdictional action
- Creative contracting mechanisms
- Rewards for over-performance
- Fire funding for restoring landscapes
- Candidate conservation agreements



As we restore the environment,
wildlife will thank us simply by
their presence

-B. Schulte