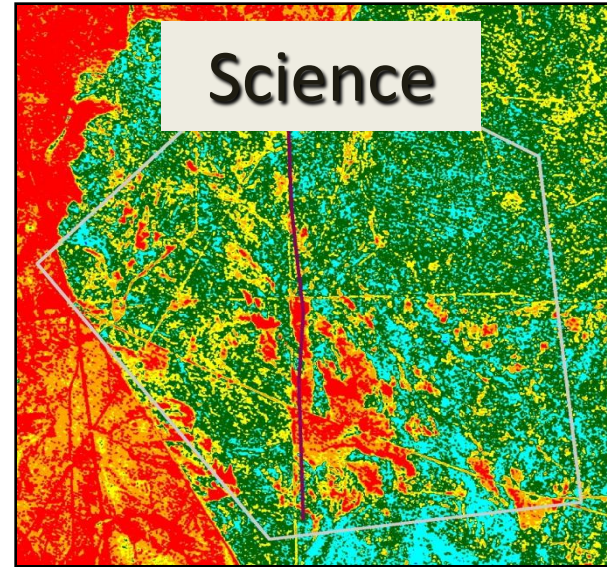


Fuels Management at the Landscape Scale

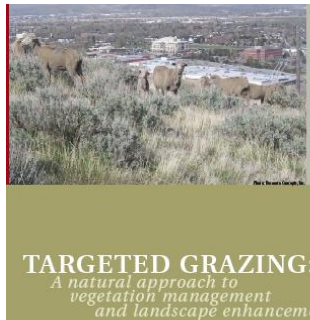
Jason Davison UNCE
Ron Clementson, BLM
Robin Tausch USFS
Jesse Juen BLM

Synthesized by
Sherman Swanson UNR
Wendell Gilgert NRCS
John Ruhs BLM
Donna Reed USFS

Murphy Complex Livestock-Fuels Report

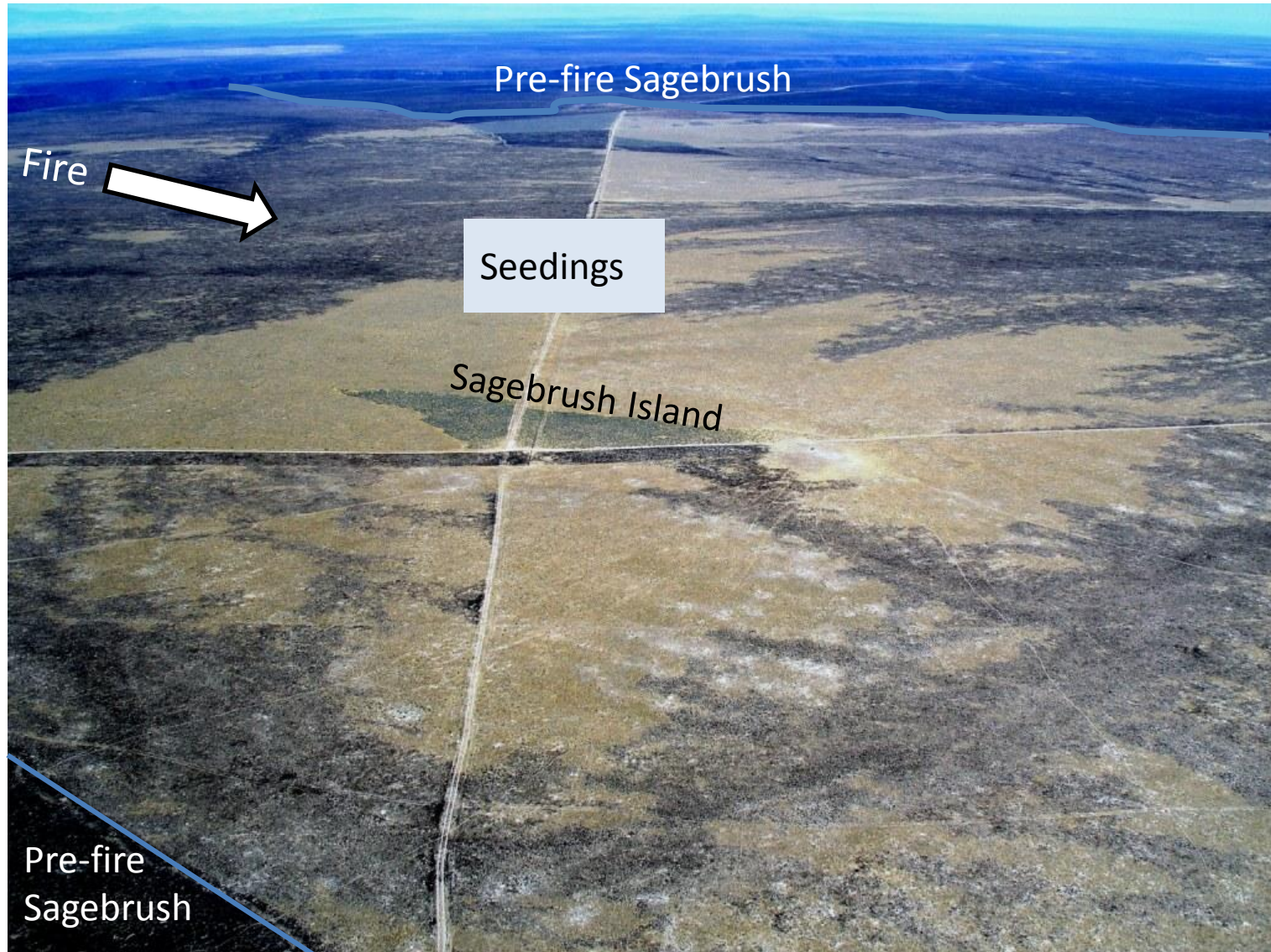


Literature

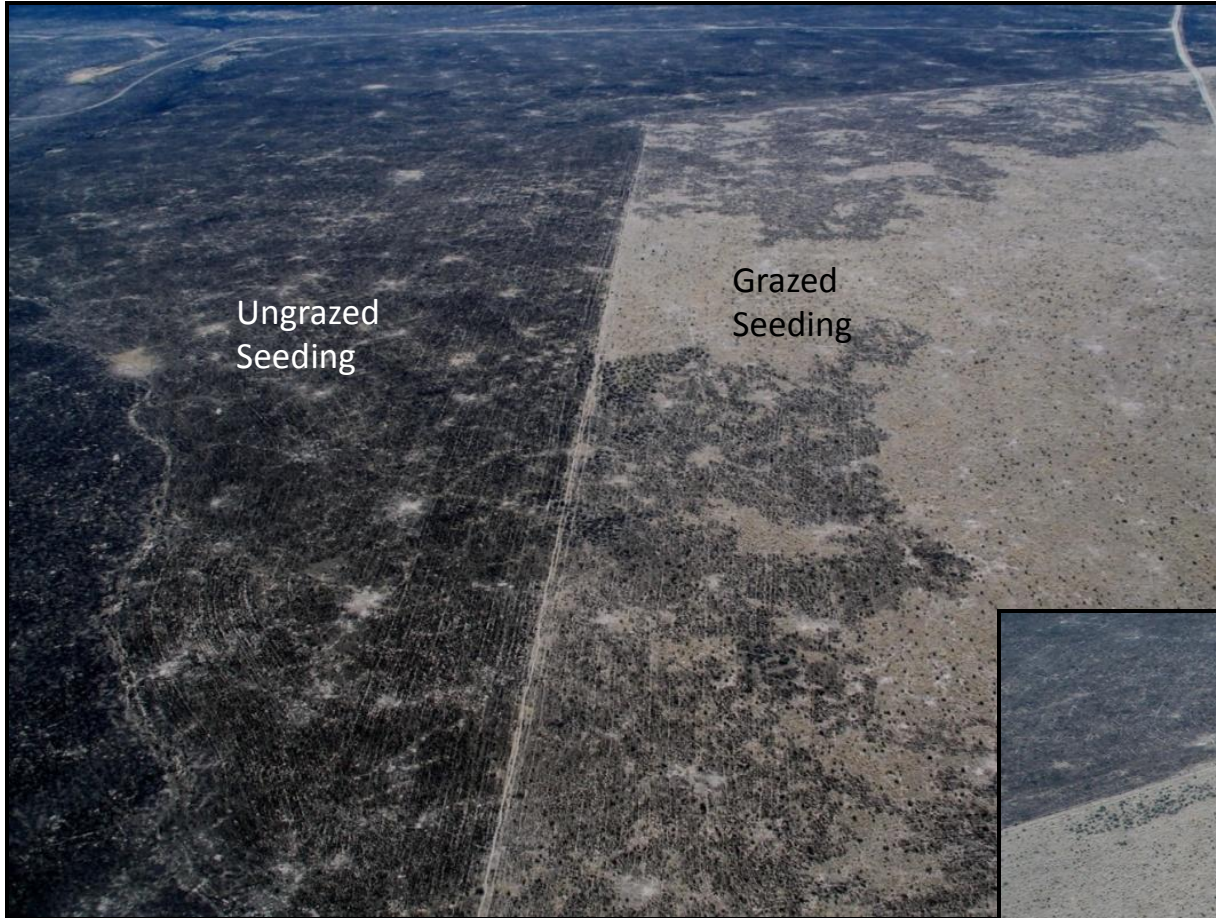


Targeted Grazing = The application of a specific kind of livestock at a determined season, duration, and intensity to accomplish defined vegetation or landscape goals.

Fire Effects in Seedlings and Sagebrush



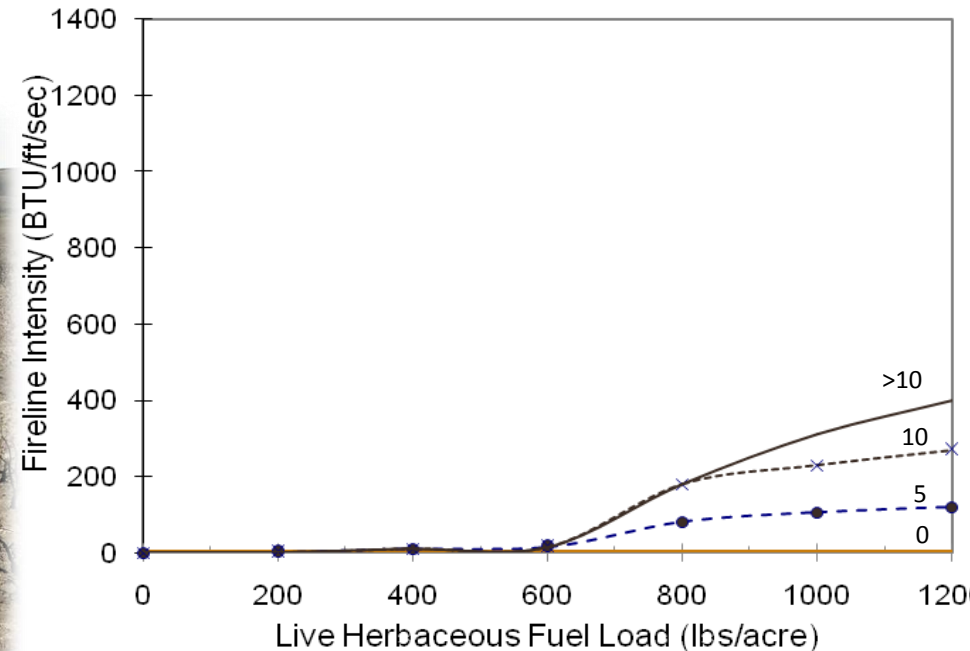
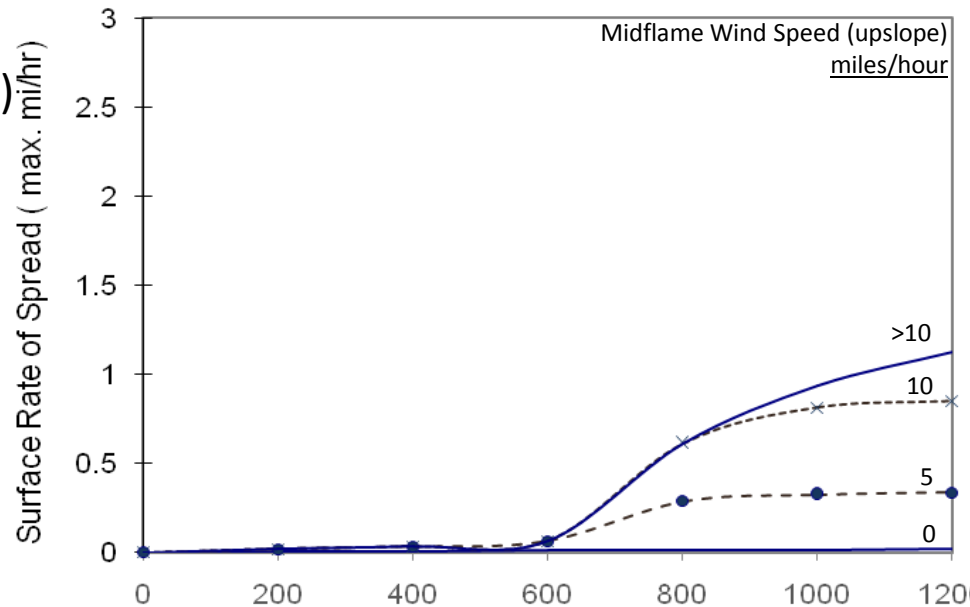
East Poison Butte Seeding: Fenceline Contrast



Sagebrush Steppe (GS1)

12% Dead Fuel Moisture

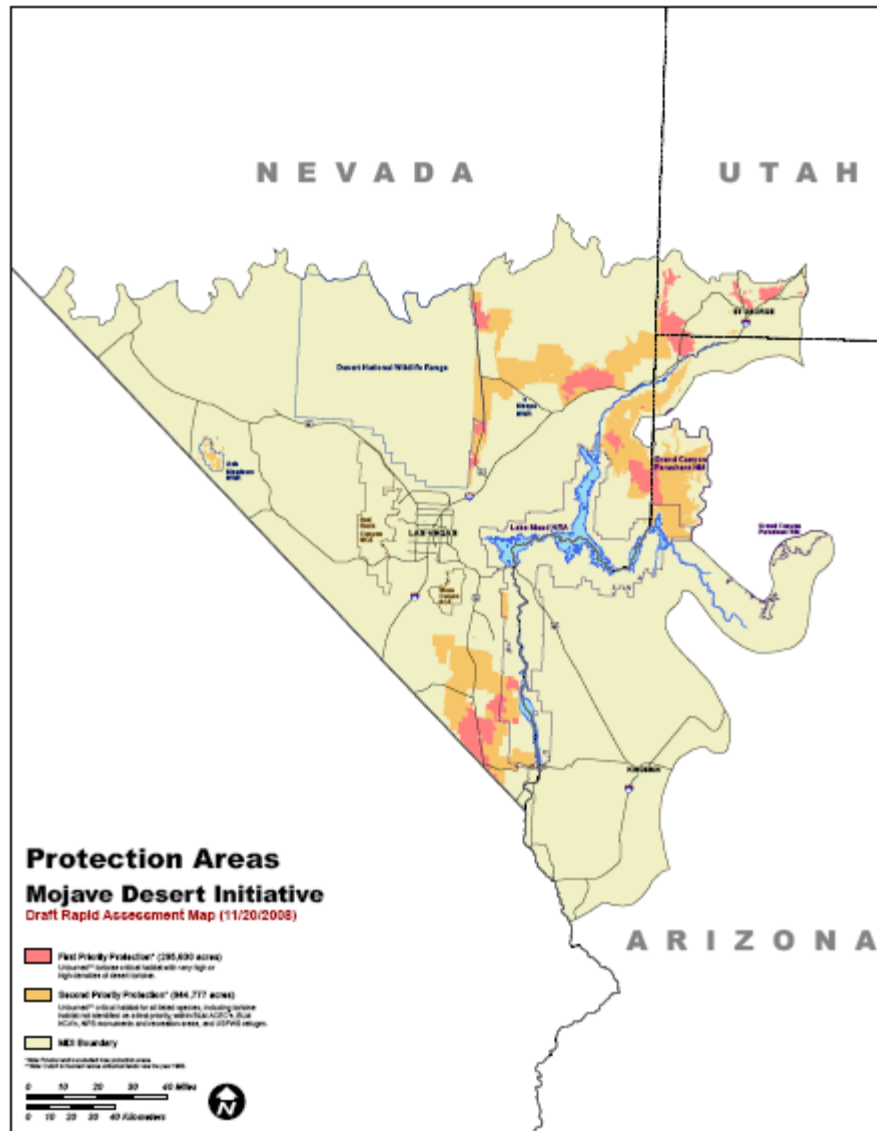
Carryover herbaceous fuels from previous years reduced by 50 percent (to 300 lb/acre)



Mojave Desert Initiative GOALS

- **Protect** Remaining Unburned Mojave Desert Vegetation and Reduce Re-burning.
- **Restore** Strategically Located Islands, Key Habitat Areas, and Corridors.
- Improve Communication, Collaboration, and Coordination.
- Maximize Leveraged Funding.





Juniper Burning

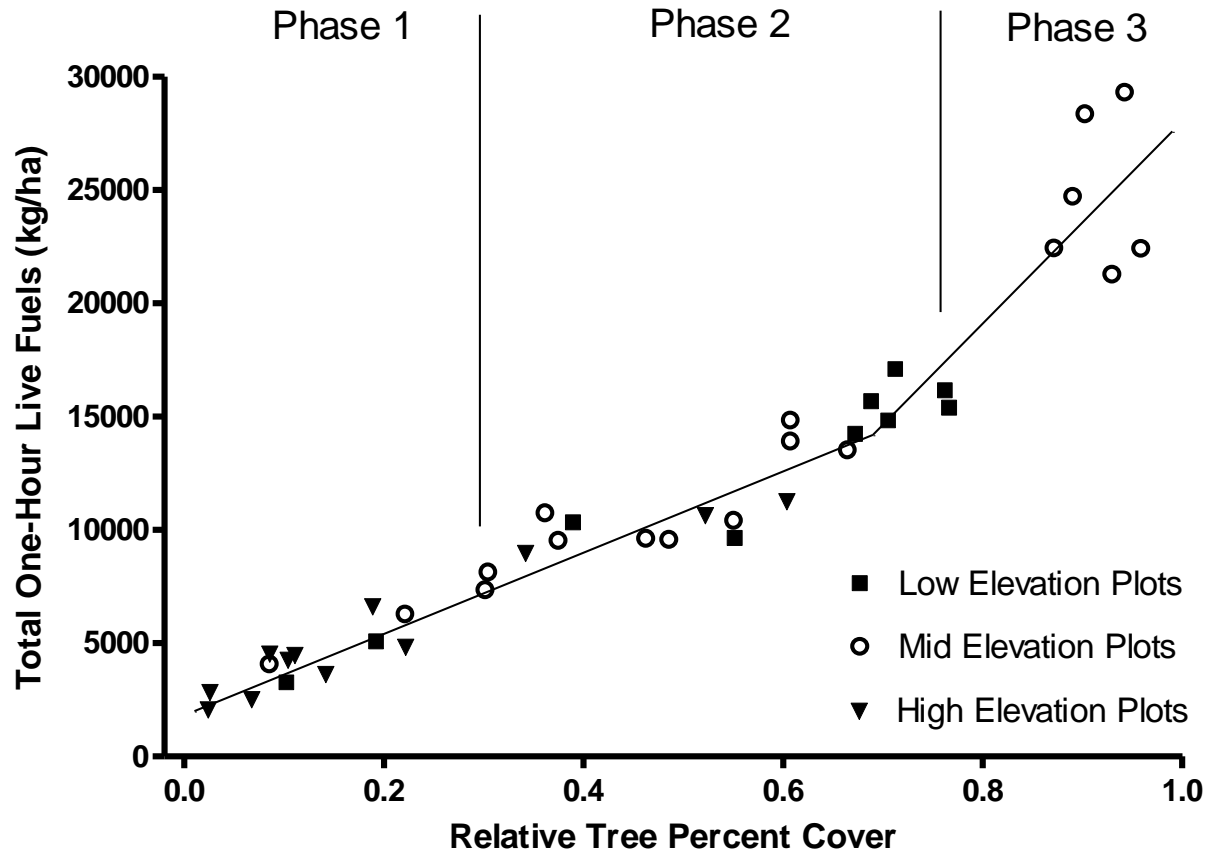


Marking Corral Prescribed Fire, August 2006

Pattern of Increase in One-Hour Live Fuels With Increasing Relative Tree Dominance in the Underdown Canyon Demonstration Area, Shoshone Mountains, NV



Underdown Canyon Demonstration Area Fuels

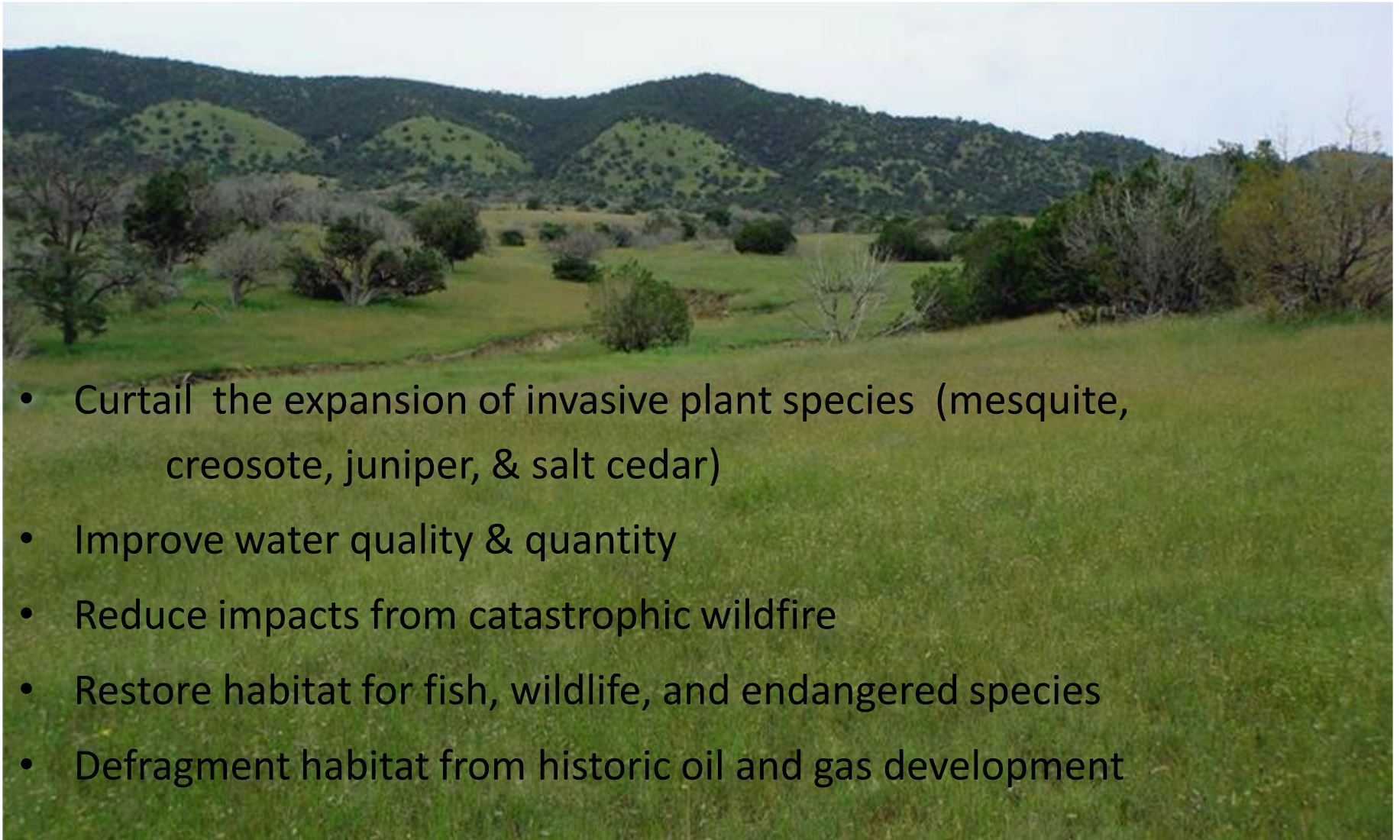




Marking Corral Prescribed Fire, Two Years Old, June 2008



Restore New Mexico



- Curtail the expansion of invasive plant species (mesquite, creosote, juniper, & salt cedar)
- Improve water quality & quantity
- Reduce impacts from catastrophic wildfire
- Restore habitat for fish, wildlife, and endangered species
- Defragment habitat from historic oil and gas development

Making It Happen

Five Steps to Success...

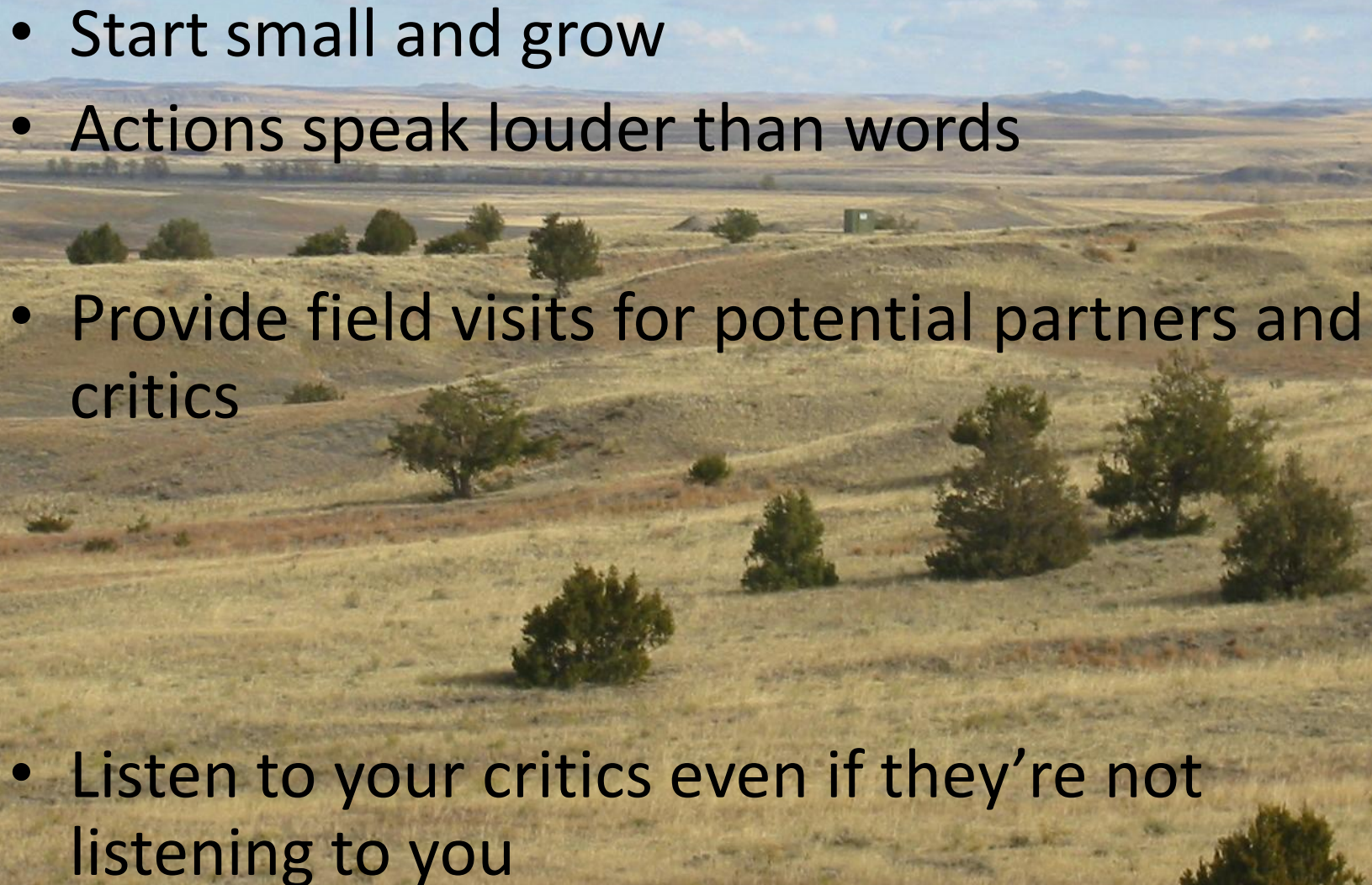
- Assess with partners
- Plan with partners
- Treat the land with partners
- Monitor with partners



Oh yeah...did I mention
the importance of
partners?

Our Solutions

Addressing Critics

- Start small and grow
 - Actions speak louder than words
 - Provide field visits for potential partners and critics
 - Listen to your critics even if they're not listening to you
- 

Your Wisdom:

- Get past obstacles with collaborative planning with many (all) partners
- Break down stovepipes with interdisciplinary planning

Your Wisdom:

- Use many tools including livestock grazing management
- Use risk analysis to focus resources (e.g., phase two of PJ)
- Place responsibility for the WUI on homeowners and cities to manage ecosystems

Your Wisdom:

- Focus on objectives with monitoring and adaptive management
- Use the planning and NEPA process to empower us with a broadly shared vision
- Reward the real results – Landscape scale ecosystems that work

Your Wisdom:

- Use site specific information and prescriptions while we think big
- Develop and use ecological site descriptions
- Strategically place fuels treatments across the landscape to reduce fire size/frequency
- Work beyond individual land ownerships

Your Wisdom:

- Take risks and use fire – Wildfire and fuels are not risk-free
- Use ESR to create greenstrips