



**APPLICATIONS OF ECOLOGICAL SITE DESCRIPTIONS
TO DECISION MAKING IN SAGEBRUSH ECOSYSTEMS**

ECOLOGICAL SITE DESCRIPTIONS AS A MANAGEMENT TOOL

JOEL BROWN and BRANDON BESTELMEYER

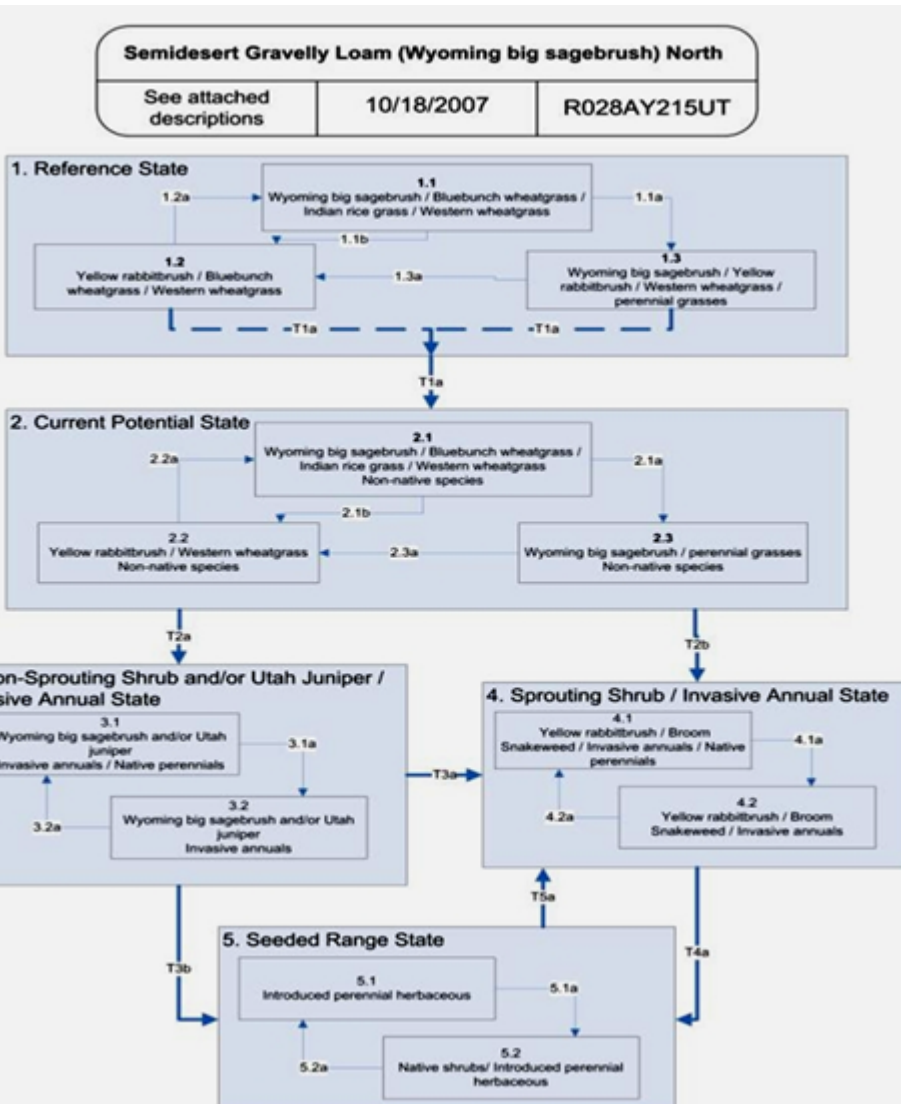
JORNADA EXPERIMENTAL RANGE



CRITICAL QUESTIONS HABITAT MANAGERS MUST ANSWER

- 1. WHERE IS THERE HABITAT POTENTIAL?**
- 2. HOW DO WE ACHIEVE THAT POTENTIAL?**
- 3. WHAT ARE THE TRADEOFFS?**

DEFINING SITE POTENTIAL

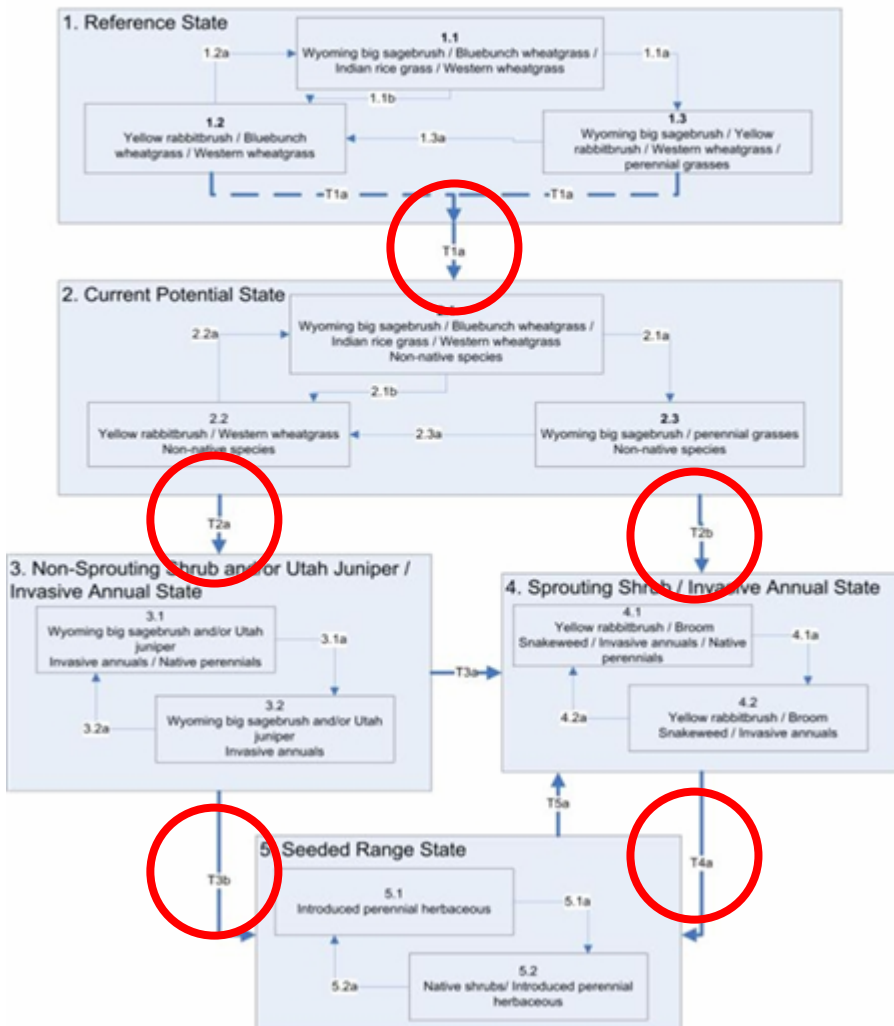


MULTIPLE TOOLS CAN DISTINGUISH EXISTING HABITAT

ESDs AND STATE AND TRANSITION MODELS ARE THE ONLY TOOL AVAILABLE FOR EXAMINING MULTIPLE POTENTIALS FOR A PIECE OF LAND

ACHIEVING SITE POTENTIAL

Semidesert Gravelly Loam (Wyoming big sagebrush) North		
See attached descriptions	10/18/2007	R028AY215UT



TRANSITIONS DESCRIBE CLIMATE AND MANAGEMENT SCENARIOS THAT EFFECT CHANGE

TRANSITION CATALOGS DESCRIBE PRACTICES AND MANAGEMENT ACTIONS REQUIRED TO ACHIEVE CHANGE, INCLUDING ECONOMIC REQUIREMENTS, IN PROBABLISTIC TERMS

DETERMINING OPTIMAL SOLUTIONS TO HABITAT PROBLEMS

LANDSCAPE AND REGIONAL SCALE CHALLENGES

ESDs ARE COMMUNITY SCALE TOOLS

**INTERACTIONS AMONG SITES DETERMINE LANDSCAPE
SCALE OUTCOMES**

**NOTHING INHERENT IN ESDs WILL PREDICT
EMERGENT PROPERTIES, GIS BASED TOOLS REQUIRED**

**ACCURATE PREDICTIONS FROM GIS TOOLS REQUIRE
ACCURATE INPUTS AT THE SITE LEVEL**

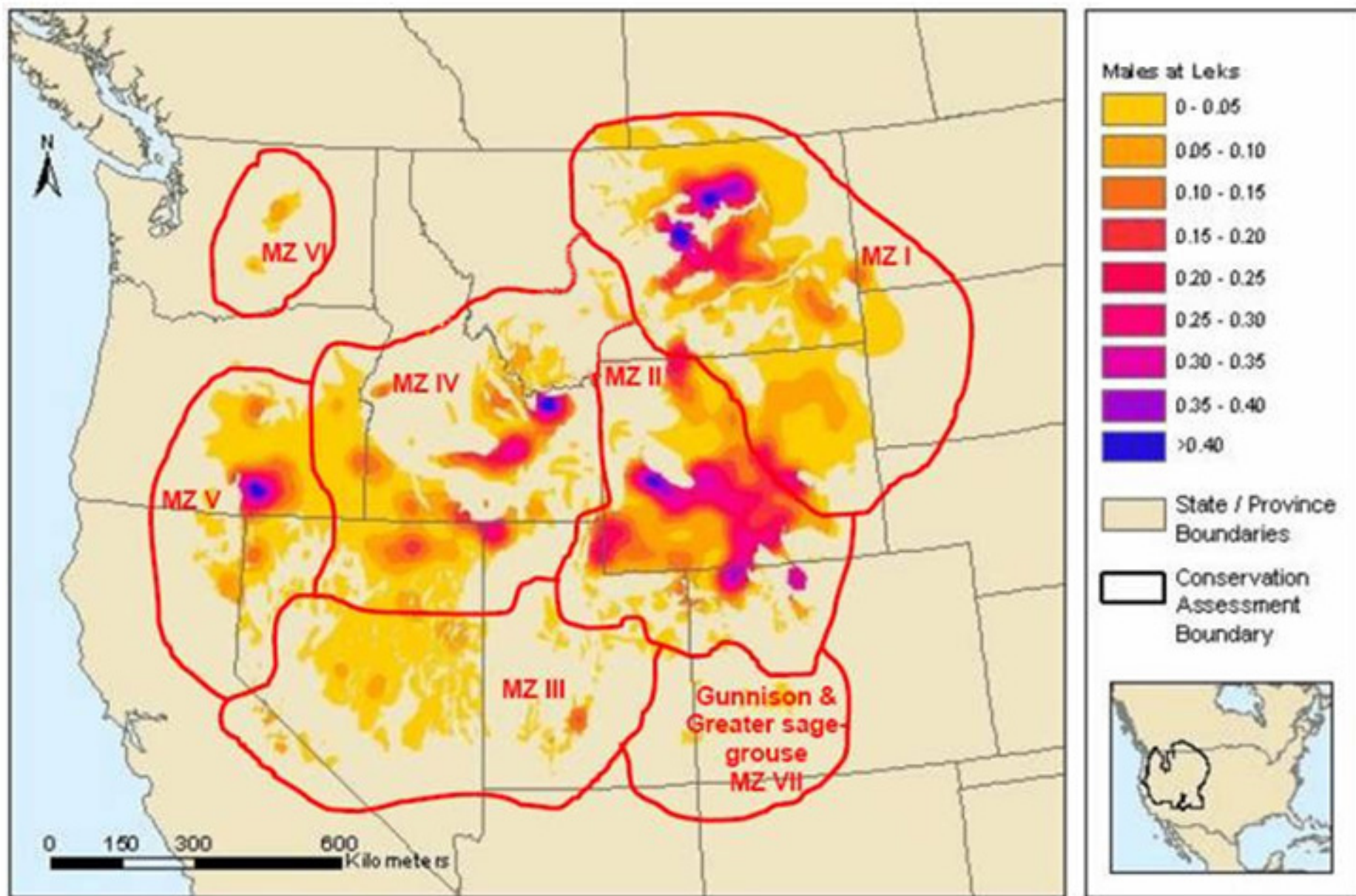
TOMORROW'S EXERCISE

EXAMINE EXISTING ESD FOR SAGEBRUSH

REVIEW GUIDELINES FOR ESDs

CRITIQUE STMs AND INTERPRETATIONS

**DEVELOP NETWORKS FOR CONTINUED
PARTICIPATION**



MZ I - Great Plains MZ

MZ II - Wyoming Basins MZ

MZ III - Southern Great Basin MZ

MZ IV - Snake River Plain MZ

MZ V - Northern Great Basin MZ

MZ VI - Columbia Basin MZ

MZ VII - Colorado Plateau MZ

